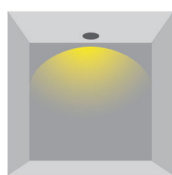
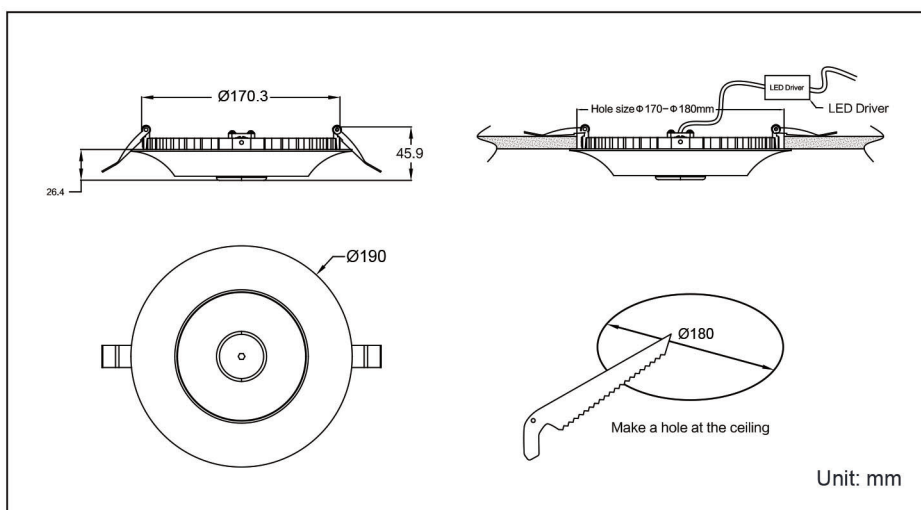


CORK Application

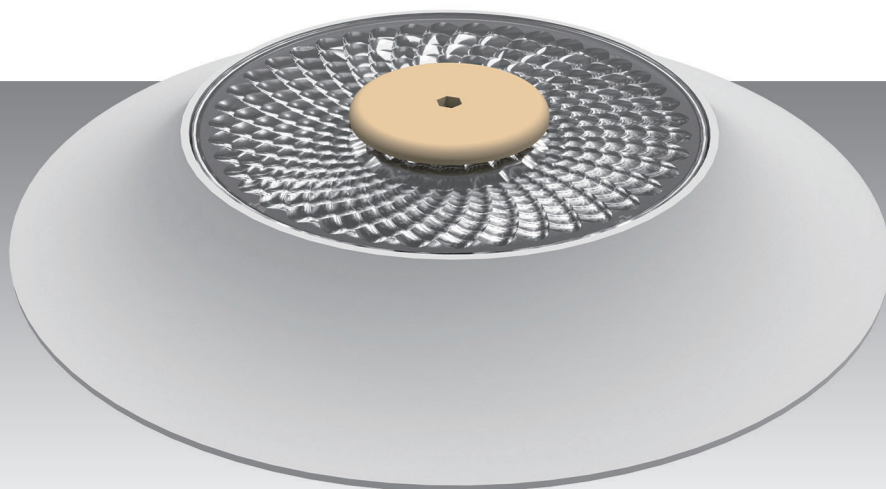
Lotus shape of the optical glass is the characteristics of this down light, uniform and soft lighting is not dazzling, aluminum die-casting fixture surface spray technology to increase the texture of this down light. Suitable for high-end hotels, temples, museums, shopping malls and other indoor lighting.



108°



DEKO LUCIE



Material

Die-casting shell of aluminium, colour: White
Surface mounting, optical system lens
Built-in drive

Performance parameters

Color temperature: Warm white 3000K, Cool white 5000K
Control: Switch
Input Voltage: 220V
LED: Cree XP-G2
Power: 10.5W
Driver: Meanwell
IP: IP45
Working Temperature: -40~50°C
Warranty: 2years/ 20000 hours lifespan, maintaining freely forever except LED chip and driver.

