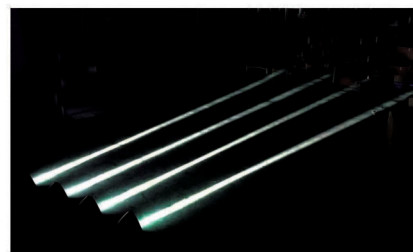
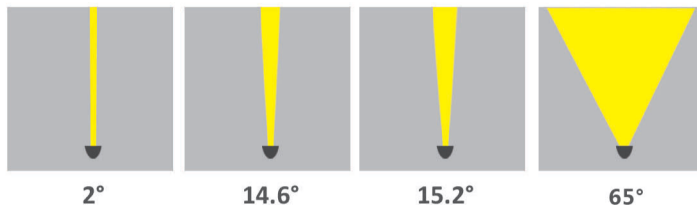


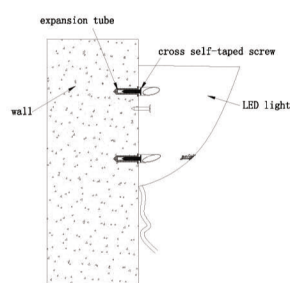
MALAHIDE

Application

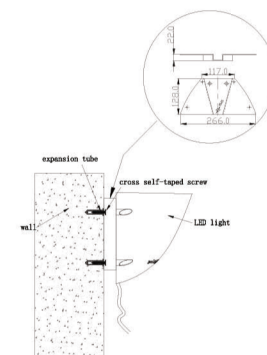
Accurate 2-degree narrow angle design, long-distance narrow beam led projection, irradiation distance up to 70-80 meters, suitable for external wall lighting project, hotel exterior wall lighting, sketching the appearance of high-rise buildings, increasing building design sense, using tempered glass, high safety performance, used for indoor and outdoor lighting, façade lighting, highlighting the outline of the building frame.



11w, 12w, 18w:

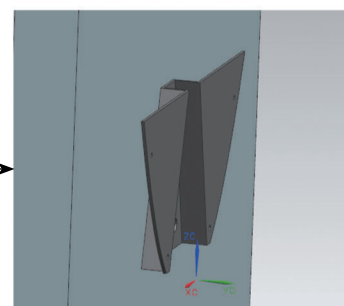
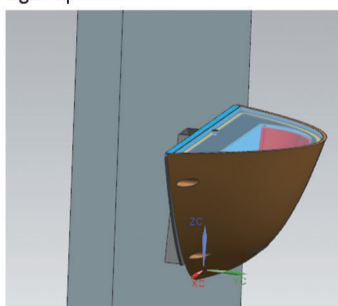


installation instruction

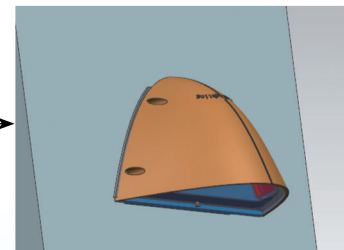
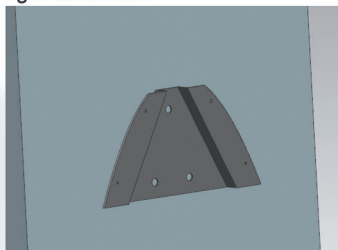


installation instruction Unit:mm

35w need mounting bracket:
light upward



light downward



DEKO
LUCÉ



Material

Die cast aluminum shell, surface coating colors: black ■ white □
 Surface-mount, optical glass lens
 Internal driver

Performance parameters

Color temperature:	Warm white 3000K, Cool white 5000K	Warm white 3000K, Cool white 5000K	Warm white 3000K, Cool white 5000K	Dimmable
Light Source:	CREE: XHP-35	CREE: XHP-50	LUMNUS: SST-90W	CREE: XHP-35
Power:	11W	18W	35W	11W
Driver:	Meanwell/ Customized	Meanwell/ Customized	Customized	Meanwell
Input Voltage:	DC24V/ AC220V	DC24V/ AC220V	AC220V	DC24V
Control Mode:	Switch	Switch	Switch	DMX512
IP Rating:	IP66			
Working temperature:	-40~50°C			
Warranty:	2years/ 20000 hours lifespan, maintaining freely forever except LED chip and driver.			

