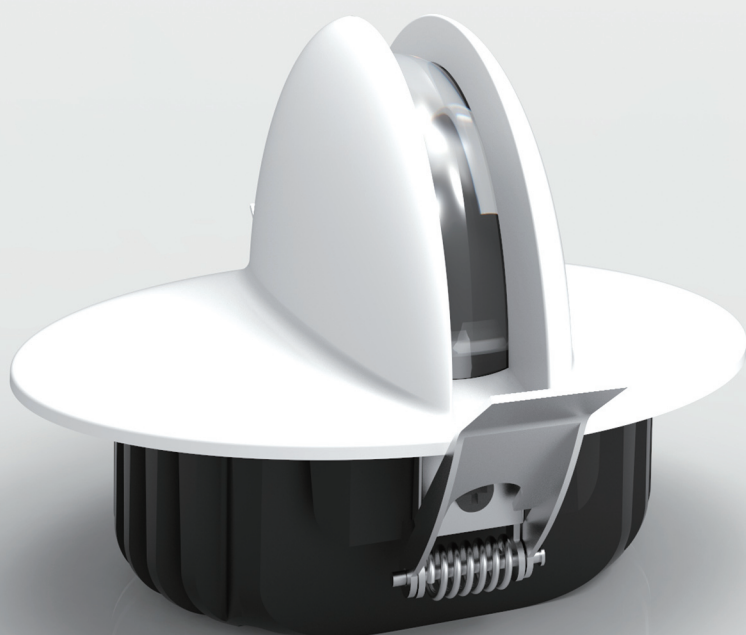
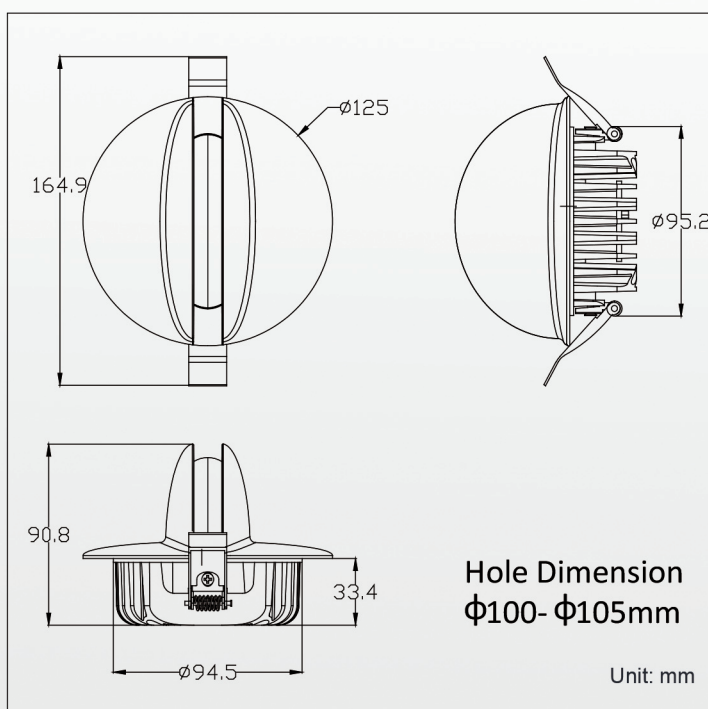
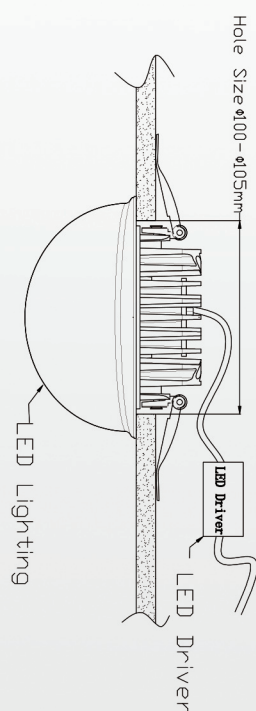
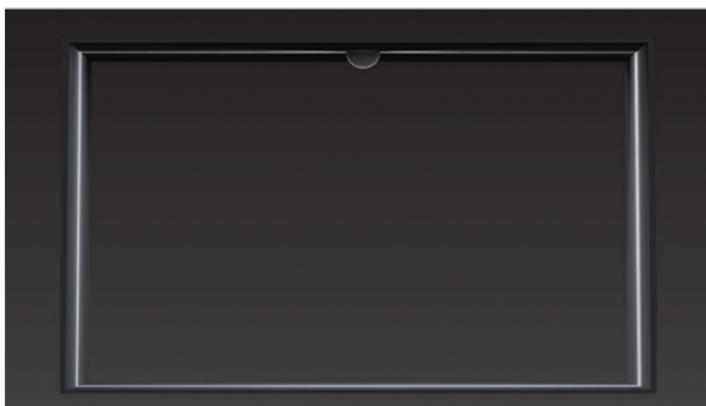
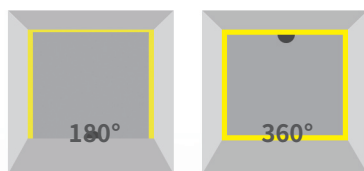


MAYO

Application

Exquisite appearance, precise lighting distribution, clear cut-off line, used for hotel aisles, corridors, forming of 360 degrees of aperture, lighting and shadow perfect combination, giving people a sense of crossing space-time tunnel. Existing RGB, gradually dimming, can interact with music . for indoor lighting.



**DEKO
LUCÉ**

Material

Die cast aluminum shell, surface coating colors: white ☐ black ☒
Recessed, optical glass lens
External driver

Performance parameters

Color temperature:	Warm white 3000K, Cool white 5000K	Red <input checked="" type="checkbox"/> Green <input checked="" type="checkbox"/> Blue <input checked="" type="checkbox"/>	RGB	Dimmable
Light Source:	CREE:XP-G2	LUXEON:L1C1	LUXEON:L1C1	CREE:XP-G2
Power:	6W	4W	6W	6W
Driver:	Meanwell	Meanwell	Meanwell	Meanwell
Input Voltage:	DC24V/AC220V	DC24V/AC220V	DC24V	DC24V
Control Mode:	ON/OFF	ON/OFF	DMX512	DMX512
IP Rating:	IP54	IP54	IP54	IP54
Working temperature:	-40~50°C	-40~50°C	-40~50°C	-40~50°C
Warrenty:	2years/ 20000 hours lifespan, maintaining freely forever except LED chip and driver.			

