

The background of the entire image is a complex, three-dimensional wireframe structure. It consists of numerous thin, white lines that intersect to form a grid of rectangular and irregular shapes, creating a sense of depth and perspective. The lines are arranged in a way that suggests a large, multi-layered architectural or industrial structure, possibly representing a floor or a series of stacked components. The overall effect is technical and futuristic.

zteca[®]
high tech flooring

MADE IN BELGIUM

MADE IN
BELGIUM

COMMERCIAL WOVEN VINYL FLOORING FOR
WORKSPACES, HOSPITALITY, HEALTHCARE,
PUBLIC SPACES AND RETAIL

2TEC2.COM

1 HIGH TECH FLOORING

2tec2 A wise choice	10	Comfort Backing	17
Installation patterns	13	2tec2 Play	18
Quality control	14		

2 WORLDWIDE PROJECTS

Neptune	22	Fireball	43
Asteroid	25	Moonrock	44
Supernova	27	Titan	47
Iron	28	Magnetite Grey	49
Planet	29	Dune	50
Flint	30	Lava	51
Black Hole	33	Orion	52
Diamond	34	Moonless Night	54
Moonless Night Green	36	Orbital	57
Coffee Bean	37	Diamond Orange	59
Steel	38	Pulsar	60
Eclipse	41	Flint Blue	63
Equinox	42	Rift	64

3 COLLECTION OVERVIEW

Barcode	70	Seamless	74
Cracked Earth	70	Colourful	76
Herringbone	71	Stripes	78
Lustre	72	Technical info	81
New Basic	73		

ABOUT US

2tec2 is made by people. A team of proud individuals. They all share a passion for innovation, design and excellence. From R&D to manufacturing to sales, it is a teamwork. And that focus and dedication delivers wonders.

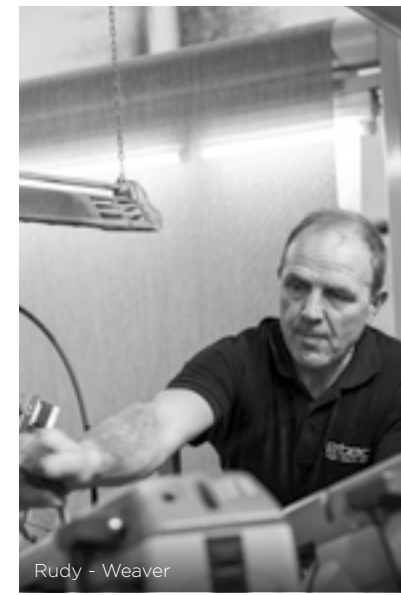
2tec2, the best vinyl flooring in the world.



Kelly - Accountant



Wesley - Lab Engineer



Rudy - Weaver



Hanne - Designer



Dirk - Operator



Gudrun - Sales Manager Belgium



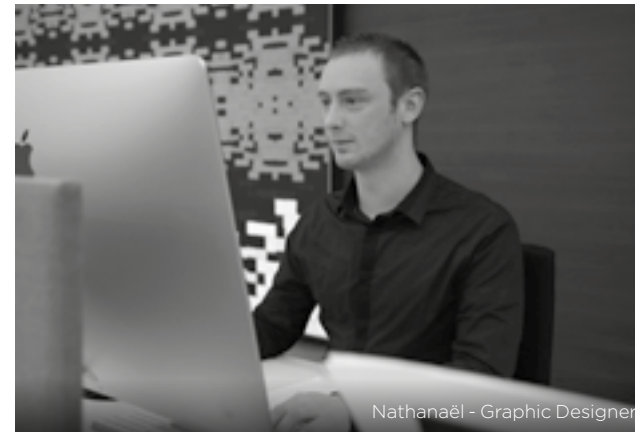
Freddy - Purchase & Planning



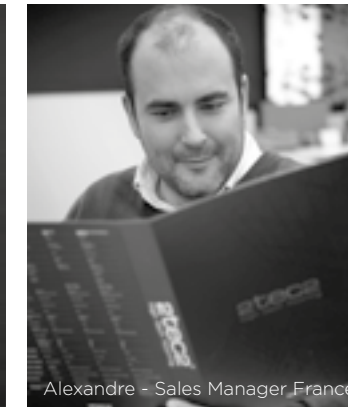
Johan - Mechanic



Daisy - Customer Service Manager



Nathanaël - Graphic Designer



Alexandre - Sales Manager France



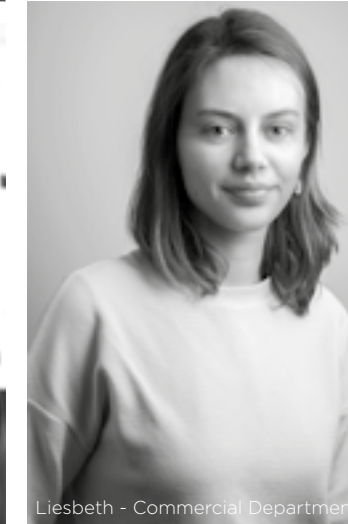
James - Managing Director



Hervé - Operator



Christian - Commercial Department



Liesbeth - Commercial Department



David - Export Manager



1 HIGH TECH FLOORING

"Fulfilling the customer's expectations stands at the core of our operations and R&D division. We act on concerns and feedback from our professional users with all new developments and for each new production batch.

We manufacture a flooring that takes durability, functionality and general comfort into account without neglecting the environmental issues.

Sustainable manufacturing is an ongoing process of improvement. A process that will continue in the future and that is essential to our core values.

This goal can be reached thanks to our integrated production and through fantastic teamwork, where the philosophy is to make quality, design and sustainability coincide."

Thomas Vantieghem
Product manager 2tec2

2TEC2 A WISE CHOICE

Extremely robust with almost no aspect change over time.

Stain resistant and water proof. Easy to clean.

Functional hybrid flooring that combines the best characteristics of both hard surface flooring and carpet.

Excellent acoustic properties and improved underfoot comfort thanks to the comfort backing. Reduces both ambient and impact sound. Impact Sound Reduction 19dB, Walking Noise Reduction 70%, Sound Absorption α_w 0,15.

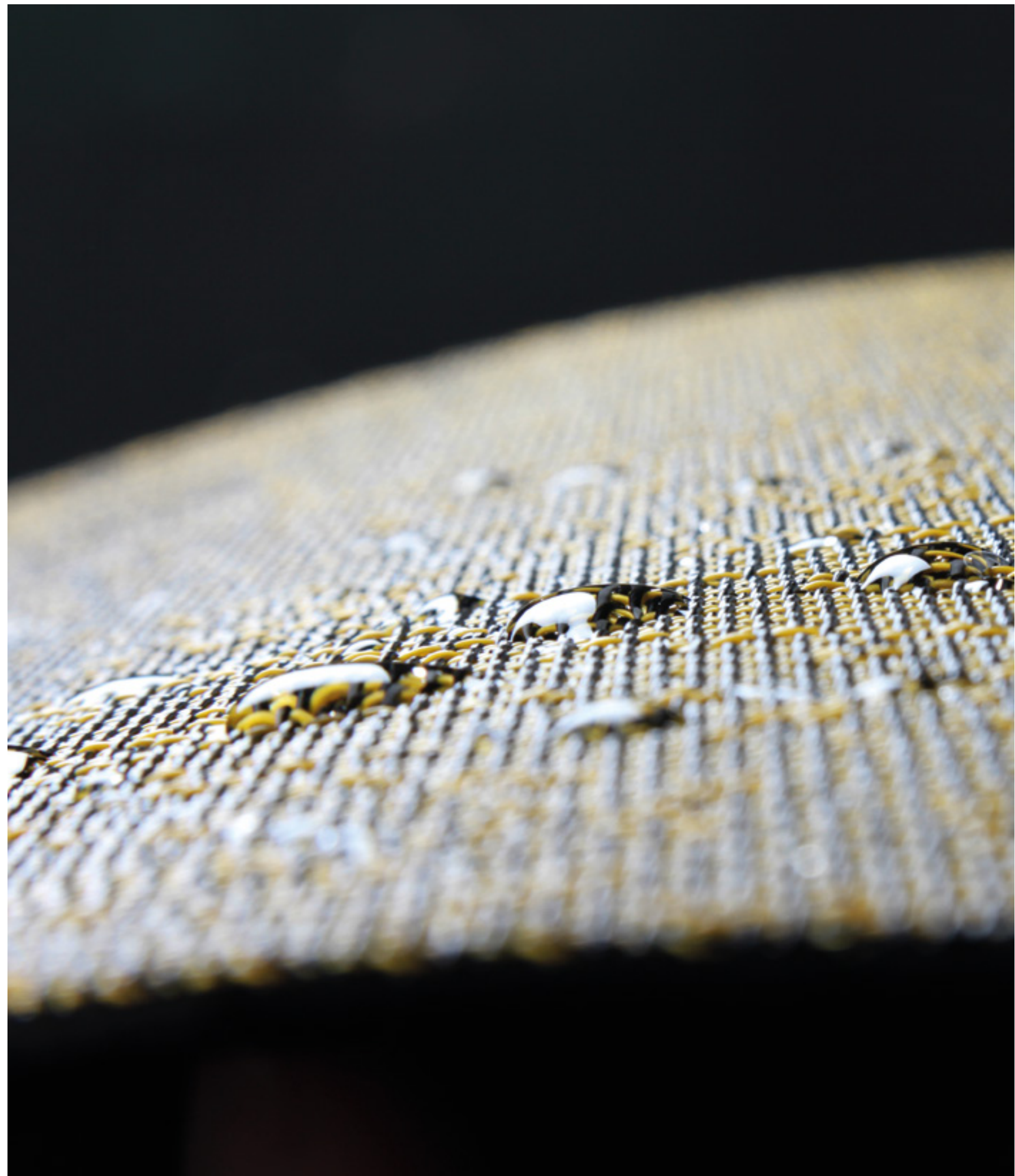
Rolls are seamless. A selection of tiles (Seamless, Lustre, Colourful and Cracked Earth collection) are seamless in a monolithic broadloom installation. See p.11 for more information.

Suitable for projects built according to BREEAM and LEED.

Contains 10% recycled material.

Innovative contemporary design look. Virtually unlimited design flexibility.

Tiles available on demand in various shapes:      





Magnetite Grey

QUARTERTURN INSTALLATION

Tiles installed in a checkerboard pattern.

Collection:

Barcode, Colourful, Cracked Earth, Lustre,
New Basic, Seamless and Stripes



Checkerboard



Magnetite Grey

MONOLITHIC INSTALLATION

Tiles installed in a uni-directional pattern have a sleek, monolithic appearance.

Collection:

Colourful, Cracked Earth, Lustre and Seamless



Ashlar



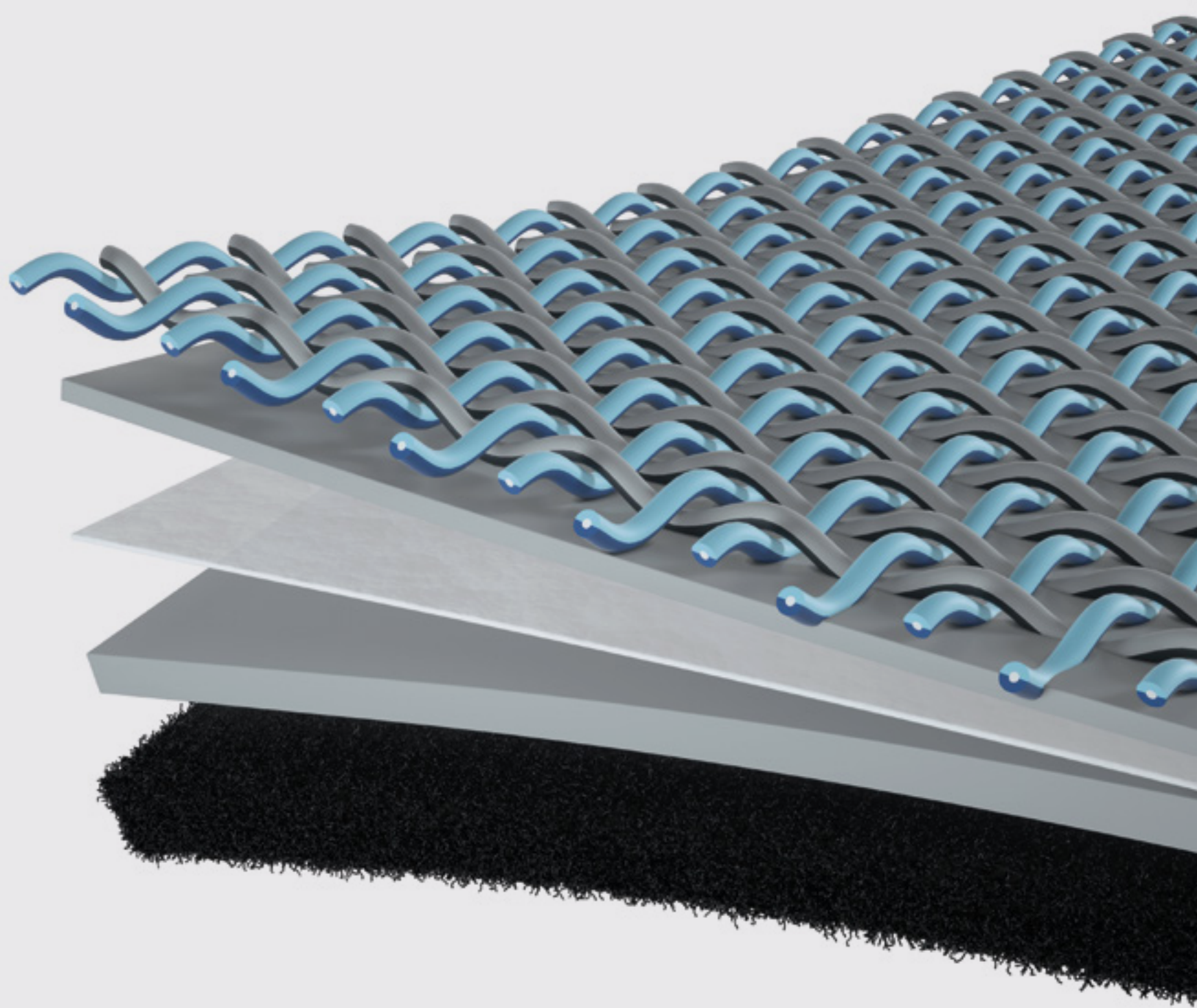
Brick

QUALITY CONTROL

2tec2 continuously improves quality and has a sophisticated R&D lab for that purpose. Manufacturing processes and output are constantly monitored with thousands of tests.

2tec2 does not follow the industry standards, 2tec2 exceeds them.





19dB

IMPACT SOUND
REDUCTION

0,15
 α_w

SOUND
ABSORPTION

70%

WALKING NOISE
REDUCTION

COMFORT BACKING®

The Comfort Backing® is standard on 2tec2 rolls and tiles. This innovative backing comes with an additional felt layer which improves sound absorption and underfoot comfort. It brings the acoustic properties of 2tec2 close to these of most carpets, exceeding by far those of hard floorings and LVT's.

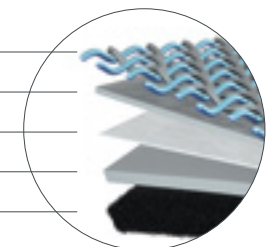
2tec2 woven layer

PVC layer

Glass fiber layer

PVC layer

New additional acoustic felt layer



2TEC2 PLAY®

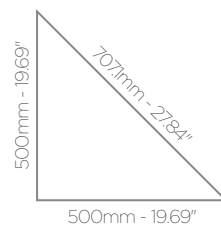
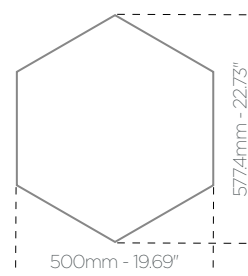
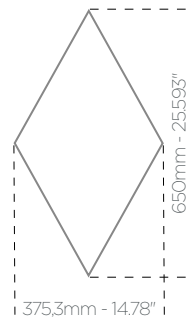
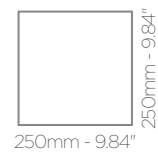
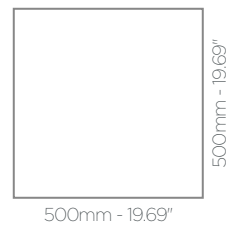
2tec2 allows you to play with various shapes to create inspiring floors in woven vinyl.

Diamonds, Hexagons, Planks, Triangles and Mini Squares are among some of our suggestions, but actually any shape and size is possible.

Choose any colour from the 2tec2 tile collection. Let your imagination flow.

Download the Play catalogue on 2tec2.com/play

Shapes:





2

WORLDWIDE PROJECTS

2tec2 has been specified by many architects & designers all over the world and installed in some outstanding projects. Here's our selection. Get Inspired.

BLACK HOLE,
ECLIPSE
& NEPTUNE TILES

SHAPE:
HEXAGON

• See p.16 for more details on special tile shapes.



ASTEROID & BLACK HOLE
TILES

Architect: Sella Concepts
Client: De Beauvoir Block
Country: United Kingdom





SUPERNOVA
TILES

SHAPE:
HEXAGON

- Client: ForMail
- Country: Belgium
- See p.16 for more details on special tile shapes.



IRON
TILES

28

Client: City of Knokke-Heist
Country: Belgium



PLANET
TILES

29

Interior Design: K+CDA
Client: Twin Peaks
Country: China

FLINT TILES

SHAPE: PLANK

- Interior Design: Aarts & Co
- Client: Trinseo
- Country: Netherlands
- See p.16 for more details on special tile shapes.





BLACK HOLE
ROLLS



DIAMOND
ROLLS

34

Architect: Vanda Interiors
Client: Porsche Center Knokke
Country: Belgium



DIAMOND
TILES

35

Interior Design: Samia Bessalah
Client: Brussels Expo
Country: Belgium



MOONLESS NIGHT GREEN
TILES



COFFEE BEAN, JUNO
& ORION TILES
SHAPE: TRIANGLE

See p.16 for more details on special tile shapes.

STEEL
ROLLS





ECLIPSE
TILES

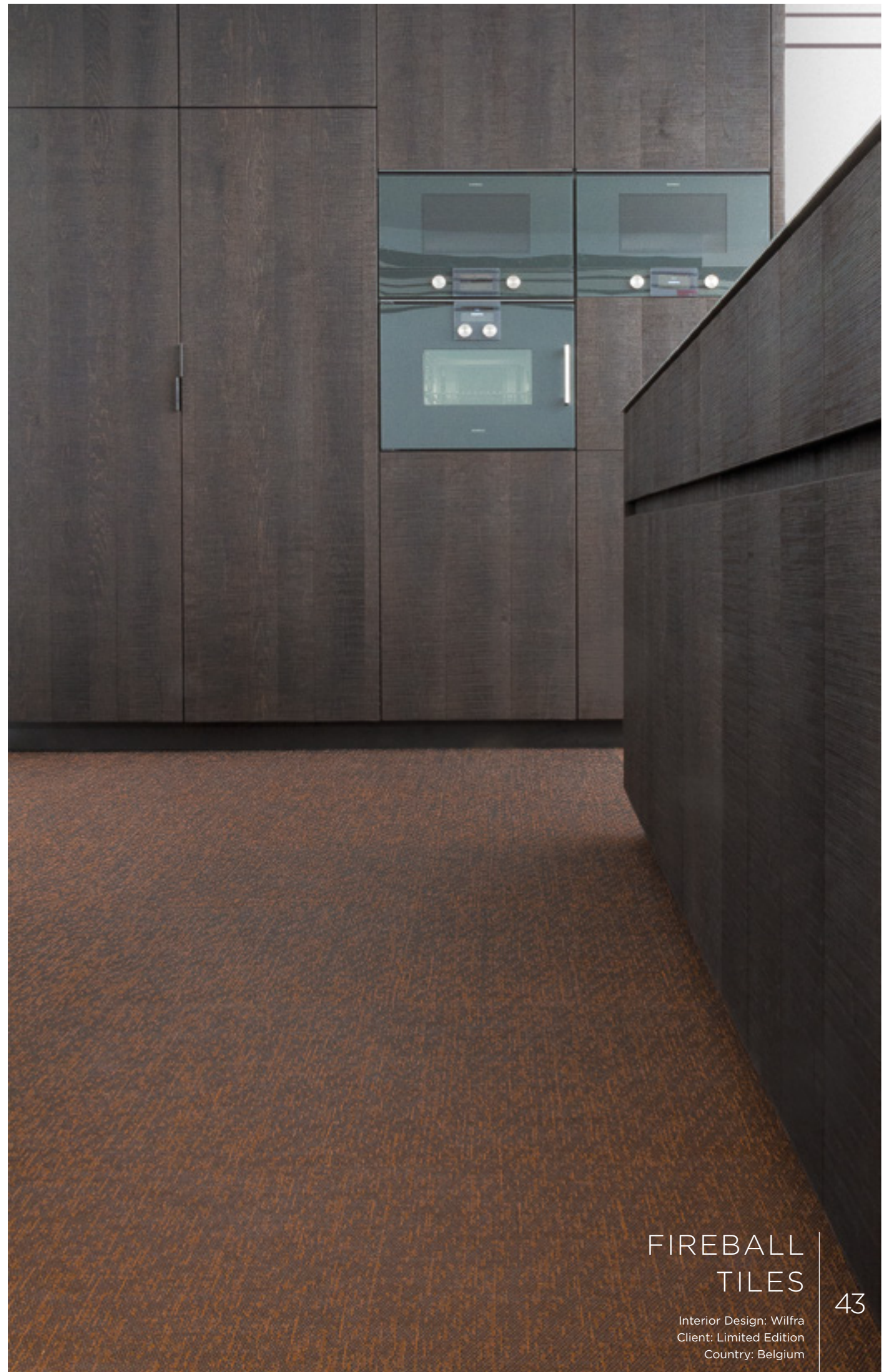
SHAPE:
HEXAGON

• See p.16 for more details on special tile shapes.



EQUINOX
TILES

42



FIREBALL
TILES

Interior Design: Wilfra
Client: Limited Edition
Country: Belgium

43

MOONROCK TILES

- Architect: Architect 360
- Client: Kapittelhof
- Country: Belgium



TITAN
TILES

Interior Design: Mary Doolan
Client: AIB
Country: United Kingdom





MAGNETITE GREY
ROLLS



DUNE
ROLLS

50

Client: Ex Arte
Country: Belgium



LAVA
ROLLS

51

Architect: Kohina Architects
Client: Microsoft Finland
Country: Finland

COFFEE BEAN,
IRON, JUNO,
NEBULA & ORION
TILES

SHAPE:
MINI SQUARE

- Architect: Moreno Architecture & Associés
- Client: Le Tricentenaire
- Country: Luxembourg
- See p.16 for more details on special tile shapes.





MOONLESS NIGHT
TILES

Client: Voeders Depré
Country: Belgium



ORBITAL & TITAN TILES

SHAPE:
DIAMOND

- Interior Design: Mary Doolan
- Client: A.I.B
- Country: United Kingdom
- See p.16 for more details on special tile shapes.



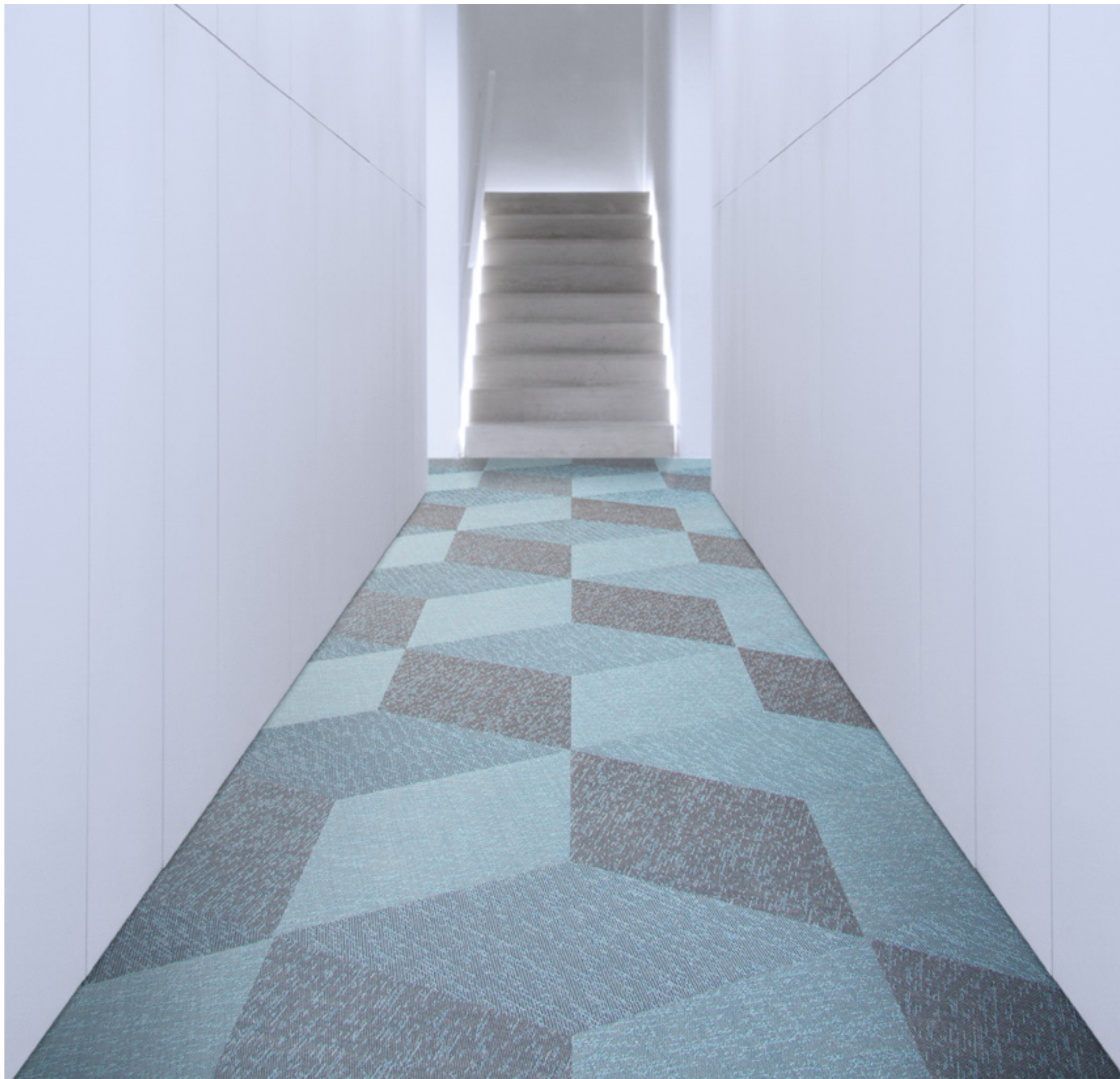
DIAMOND ORANGE
ROLLS

Interior Design: Fair Wood Builds
Client: IZAR Wellness Institute
Country: United States

PULSAR
TILES

SHAPE:
DIAMOND

• See p.16 for more details on special tile shapes.





FLINT BLUE ROLLS

- Architect: Conception et réalisation Majorelle
- Client: Deloitte
- Country: France

RIFT TILES

- **Architect:** Architects in Motion
- **Client:** Private Bank
- **Country:** Belgium





WORLDWIDE PROJECTS

WORKSPACE

AIB, UK - Fabernovel, France - Bluefort, Malta - Tosoh, Netherlands - Bank Delen, Belgium - De Beauvoir Block, UK - Banco Cerregosa, Portugal - Pure Pharma, Belgium - Monaco Informatique, Monaco - Deloitte, France - DHL, Greece - Renault Technocenter, France - LinkedIn, USA - Dior, France - Ernst & Young, Greece - Ferrero, Italy - Tripadvisor HQ, USA - Panasonic, Japan - Garage Citroën, France - Warner Music, Belgium - Gazprom Neft, Russia - Google, UK - BMW, Belgium - Cartier, UK - Coca-Cola, Germany - Pfizer, Hungary - Rolls-Royce, Belgium - Discovery Chanel, Italy - BBC, USA - Oracle, USA - Fedex, Belgium - Autodesk, USA - BNB Paribas-Fortis Bank, Belgium - Hay group, The Netherlands - Hewlett Packard, Romania - IBM, USA - Johnson & Johnson, Belgium - Kinnarps, France - Relief International, USA - Leighton Constructions, Australia - Microsoft, Finland - Mittal Rozak HQ, Turkey - Philip Morris, Czech Republic - Portugal Telecom, Portugal - Shell, The Netherlands - Stanley Black & Decker, Italy - Volvo Trucks, Belgium - Deloitte, France - Buzzy Nest, Belgium - L'Oréal, Germany, France - FairPlane, Germany

HOSPITALITY

Bel Air, USA - Novotel, France - 'W'hotel, USA - Asklepion, Czech Republic - Astoria Hotel, Slovenia - Byblos, France - Cannery Casino, USA - Club Méditerranée, France - Center Parks, France - Casino Barrière, France - D-Hotel, Belgium - Lancia Lounge Bar, Belgium - Lufthansa, Germany - Onde, Australia - Sabaya Resort, Australia - Sheraton Hotel, USA - Sofitel, Morocco - Soncna HisaHotel, Slovenia - Starbucks, Worldwide - Sun Hotel, Portugal - Room 230, Italy - Marriott, Worldwide

RETAIL

CIC Bank, France - Rolex, Serbia - Reiseland, Germany - Lavazza, Italy - Hugo Boss, Worldwide - Longchamp, Worldwide - Atol, France - Axa Bank, Belgium - Breuninger, Germany - Carolina Herrera, Latin America - Credit Agricole, France - Creditbank, Bulgaria - Daniel Hechter, France - Davidoff, Worldwide - Dorothy Perkins, Worldwide - Evans Stores, UK - Finanzbank, Turkey - Galeries Lafayette, France - ING Bank, Romania - Odea Bank, Turkey - Private Banking APK, Luxembourg - Rabobank, The Netherlands - Sampobank, Estonia - Samsung, Italy - Security Innovation LAB, The Netherlands - Seibu Department Store, Japan - Sberbank, Russia - Vodaphone Spain, Portugal, Malta - Unicredit, Austria - HypoVereinsbank, Germany - Menswear, Norway - KBC, Belgium - Crédit Lyonnais, France - Shabelski, Ukraine

SHOWROOM & EXHIBITION

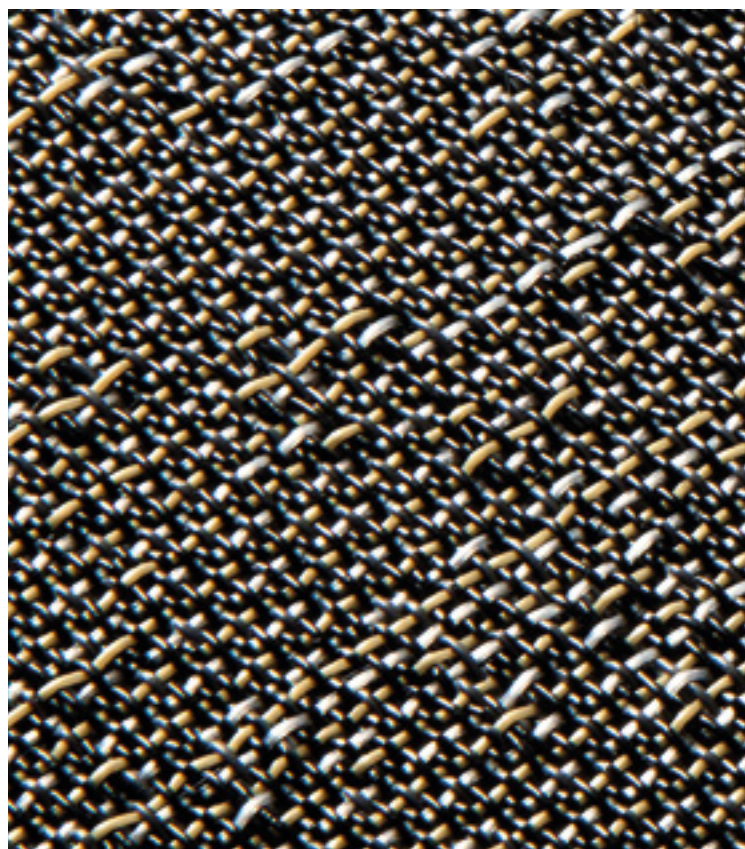
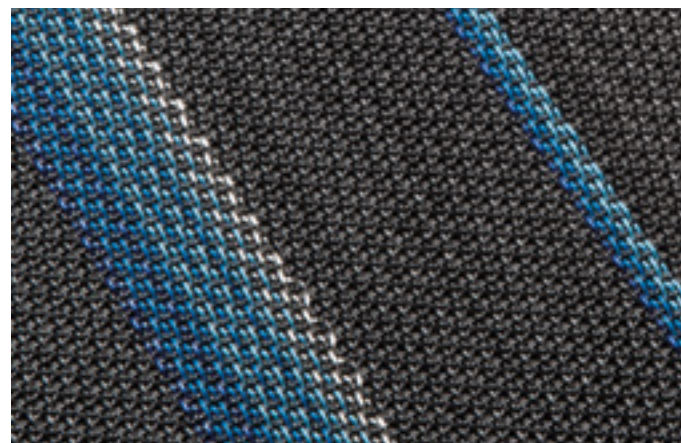
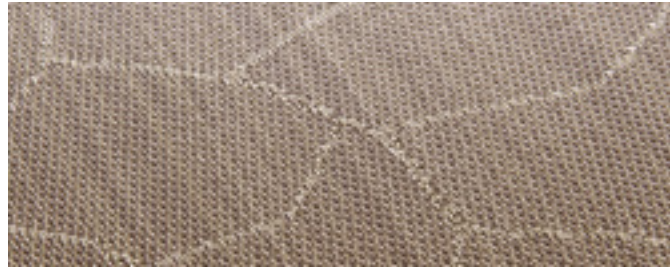
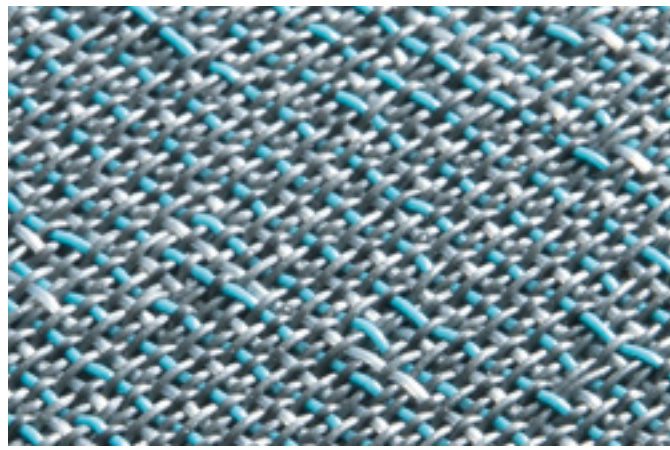
Giorgio Armani, Italy - Lenovo, Czech Republic - BMW, Romania - Brice, France - Casaligne, France - Bouyghes Construction, France - Peugeot, Switzerland - Daikin Europe, Belgium - Dolce Gabbana, UK - Guerlain Cosmetics, France - Berlioni, Italy - Hyundai Salon De L'auto, France - Mitsubishi, France - Opel, Belgium - Porsche Group, Belgium - Le Tricentenaire, Luxembourg - Whirlpool, Czech Republic - Nissan, Germany - Motor Show, Germany

PUBLIC SPACES

Brussels Expo, Belgium - Musée des Arts Décoratifs, France - City of Las Vegas, USA - University San Jorge Zaragoza, Spain - Philips Arena, USA - Navarra University, Spain - Norwegian Embassy, Greece - Romerio University, Lithuania - Chocolate Museum, Belgium - Archeological & Historical Museum of Kernave, Lithuania - Harvard Club of NYC, USA - Korupark Cinema Complex, Turkey - Musée Du Quai Branly, France - Public Library, Belgium - LVMH, France - School of Management IEDC, Slovenia - Occidental College, USA - Grace Institute, USA - Médiathèque de Val d'Isère, France - La Grande Arche, France - MIPIM, France

HEALTHCARE

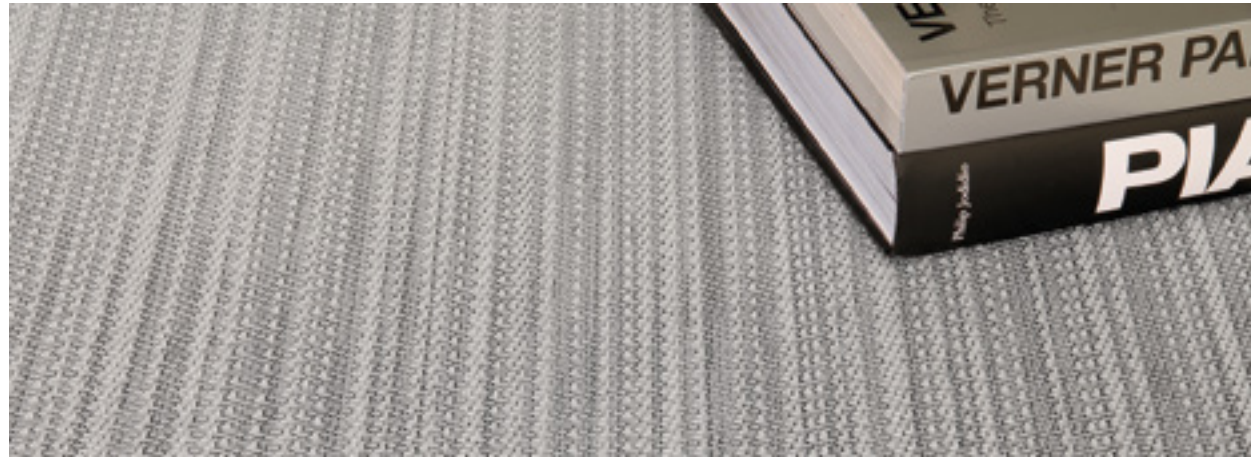
Clinica Prof. Luis Jardim, Portugal - Psychiatric Center Caritas, Belgium - Life Time Fitness Center, USA - Kapittelhof Resthouse, Belgium - Arena Health Club, Portugal - Hillside Fitness Club, Turkey - Hyde Park Club, Australia - IZAR Wellness Institute, USA



3

COLLECTION
OVERVIEW

BARCODE



Quartz - Roll & Tile

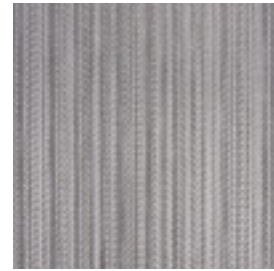


SCALE: 1/12.5

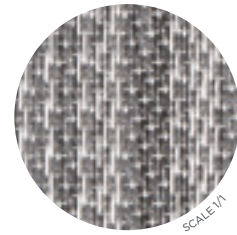


SCALE: 1/1

Diamond - Roll & Tile



SCALE: 1/12.5



SCALE: 1/1

CRACKED EARTH



Arid - Roll & Tile

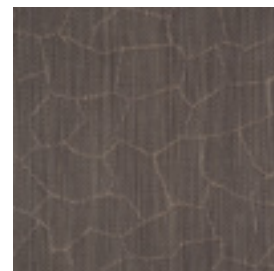


SCALE: 1/12.5

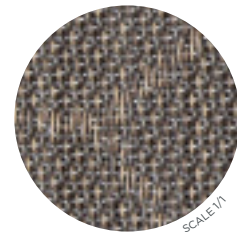


SCALE: 1/1

Rift - Roll & Tile

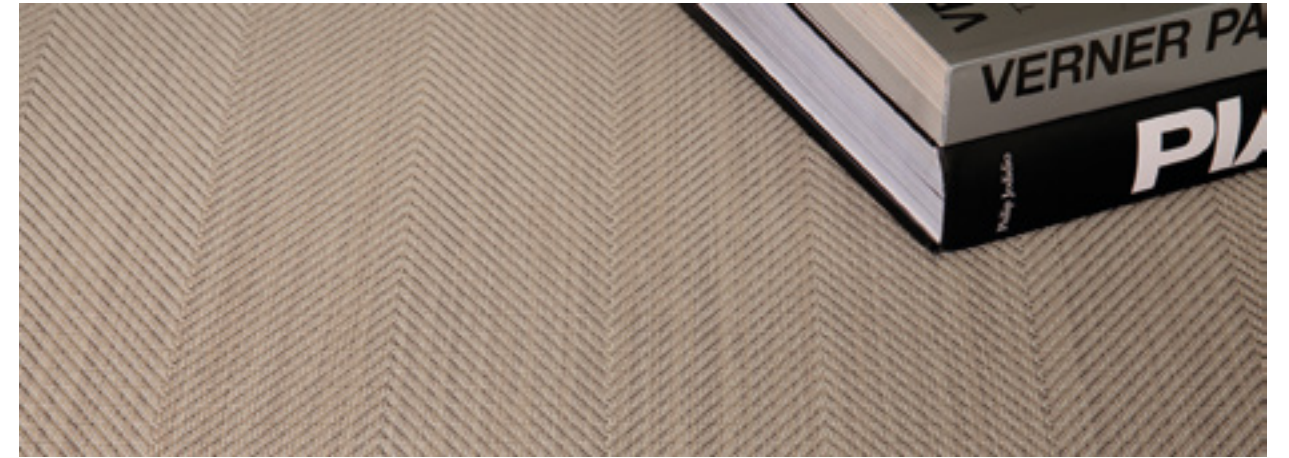


SCALE: 1/12.5



SCALE: 1/1

HERRINGBONE



Oyster - Roll



SCALE: 1/12.5



SCALE: 1/1

Sandstone - Roll

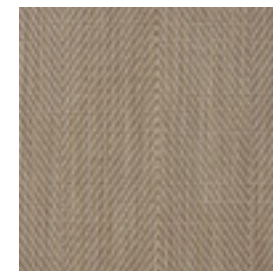


SCALE: 1/12.5



SCALE: 1/1

Dune - Roll

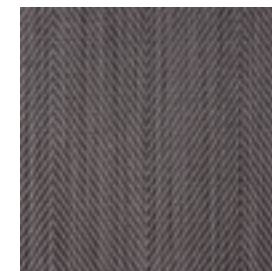


SCALE: 1/12.5

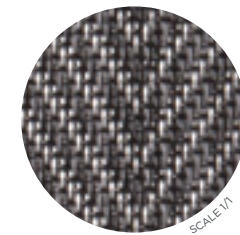


SCALE: 1/1

Steel - Roll



SCALE: 1/12.5



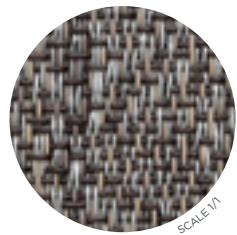
SCALE: 1/1



Morion Brown - Roll & Tile



SCALE: 1/12.5

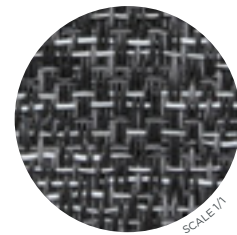


SCALE: 1/1

Obsidian Black - Roll & Tile

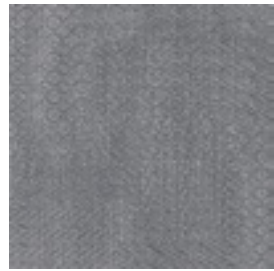


SCALE: 1/12.5

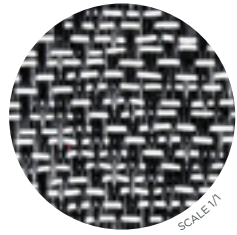


SCALE: 1/1

Chromite Grey - Roll & Tile



SCALE: 1/12.5

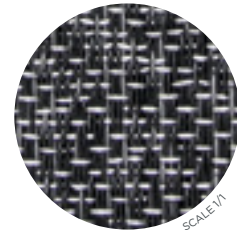


SCALE: 1/1

Magnetite Grey - Roll & Tile



SCALE: 1/12.5



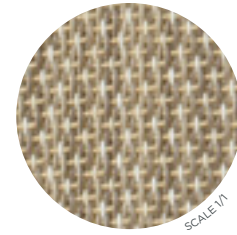
SCALE: 1/1



Topaz - Roll & Tile



SCALE: 1/12.5



SCALE: 1/1

Canyon - Roll & Tile



SCALE: 1/12.5

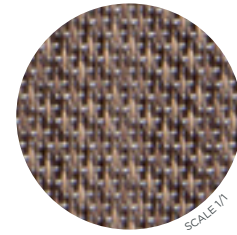


SCALE: 1/1

Flint - Roll & Tile



SCALE: 1/12.5



SCALE: 1/1

Opal - Roll & Tile

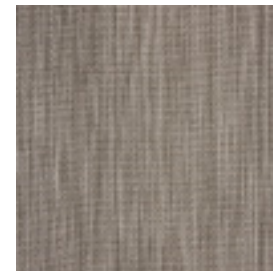


SCALE: 1/12.5

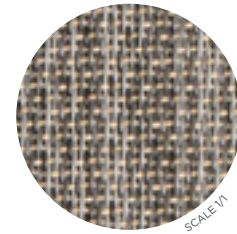


SCALE: 1/1

Gritstone - Roll & Tile

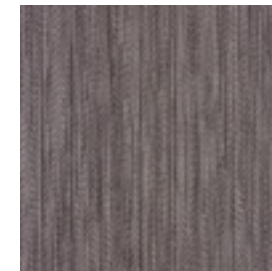


SCALE: 1/12.5

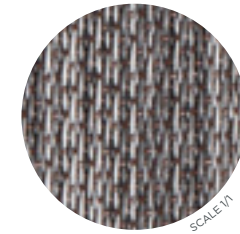


SCALE: 1/1

Lava - Roll & Tile

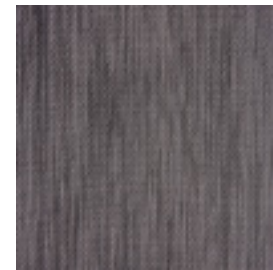


SCALE: 1/12.5

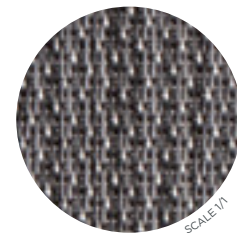


SCALE: 1/1

Bazalt - Roll & Tile

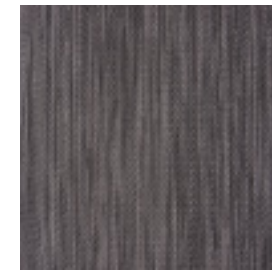


SCALE: 1/12.5

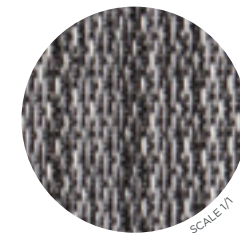


SCALE: 1/1

Iron - Roll & Tile



SCALE: 1/12.5



SCALE: 1/1



Moonrock - Roll & Tile

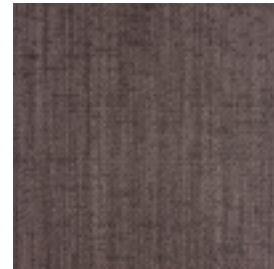


SCALE: 1/12,5



SCALE: 1/1

Nebula - Roll & Tile



SCALE: 1/12,5



SCALE: 1/1

Coffee Bean - Roll & Tile

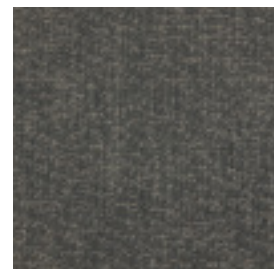


SCALE: 1/12,5

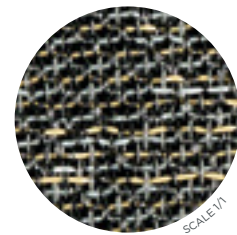


SCALE: 1/1

Neptune - Roll & Tile



SCALE: 1/12,5

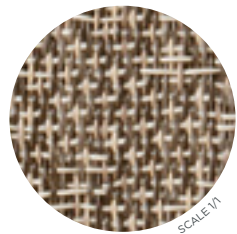


SCALE: 1/1

Juno - Roll & Tile



SCALE: 1/12,5

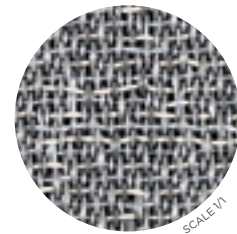


SCALE: 1/1

Titan - Roll & Tile



SCALE: 1/12,5



SCALE: 1/1

Orion - Roll & Tile

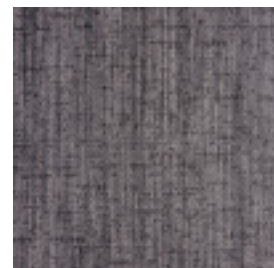


SCALE: SCALE: 1/12,5

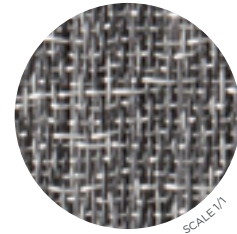


SCALE: 1/1

Moonless Night - Roll & Tile

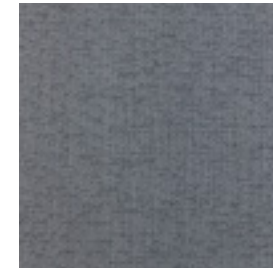


SCALE: 1/12,5

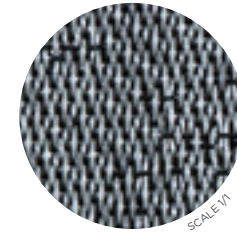


SCALE: 1/1

Andromeda - Roll & Tile

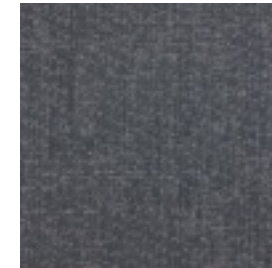


SCALE: 1/12,5

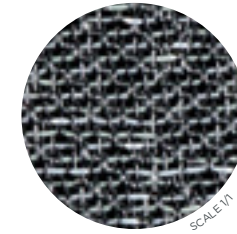


SCALE: 1/1

Black Hole - Roll & Tile

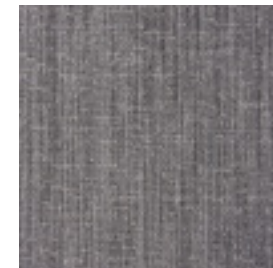


SCALE: 1/12,5

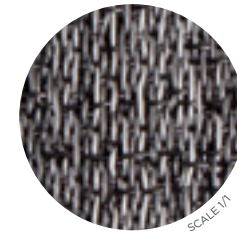


SCALE: 1/1

Planet - Roll & Tile

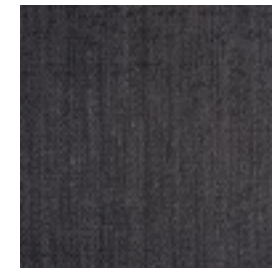


SCALE: SCALE: 1/12,5

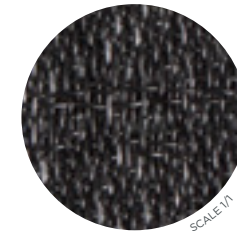


SCALE: 1/1

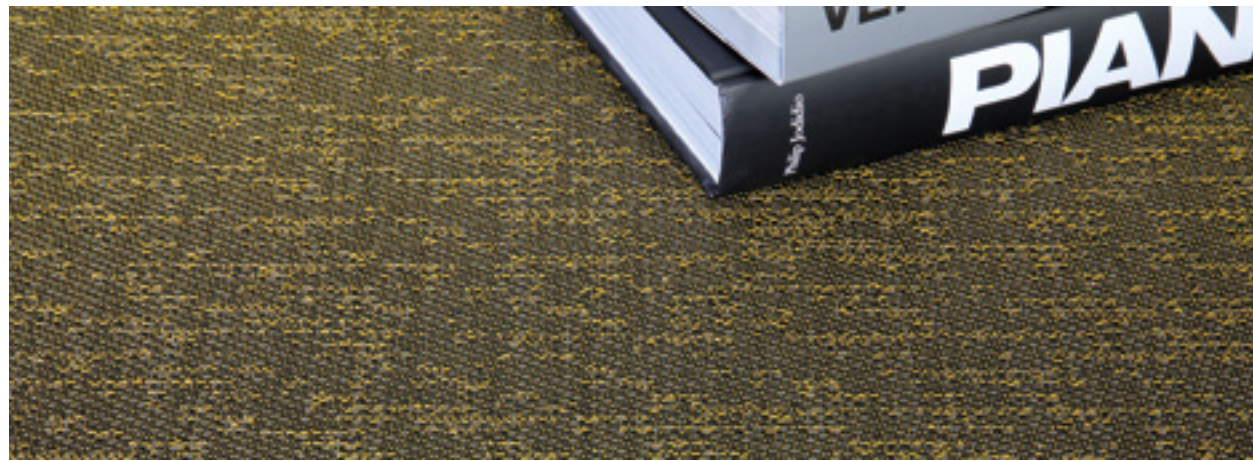
Eclipse - Roll & Tile



SCALE: 1/12,5



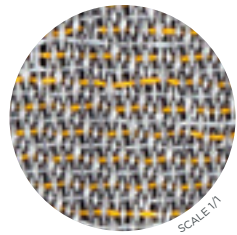
SCALE: 1/1



Zenith - Roll & Tile



SCALE: 1/12.5

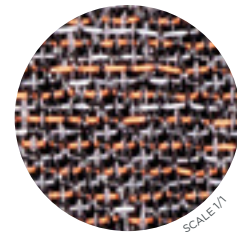


SCALE: 1/1

Corona - Roll & Tile



SCALE: 1/12.5

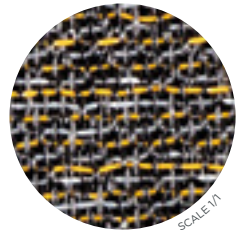


SCALE: 1/1

Quasar - Roll & Tile



SCALE: 1/12.5

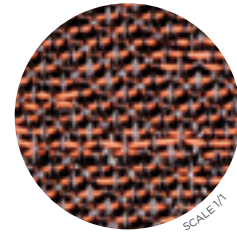


SCALE: 1/1

Fireball - Roll & Tile

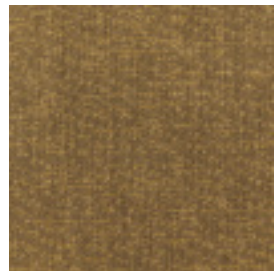


SCALE: 1/12.5

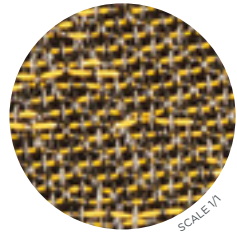


SCALE: 1/1

Supernova - Roll & Tile



SCALE: SCALE: 1/12.5

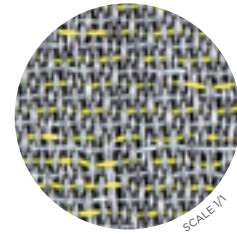


SCALE: 1/1

Atmosphere - Roll & Tile



SCALE: 1/12.5

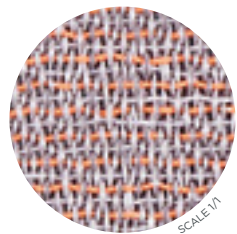


SCALE: 1/1

Asteroid - Roll & Tile



SCALE: 1/12.5

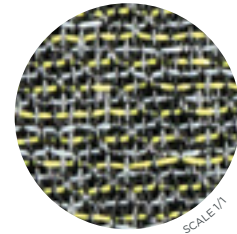


SCALE: 1/1

Zodiac - Roll & Tile

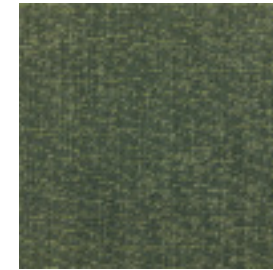


SCALE: 1/12.5

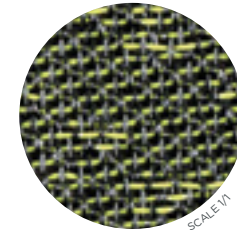


SCALE: 1/1

Orbital - Roll & Tile



SCALE: 1/12.5

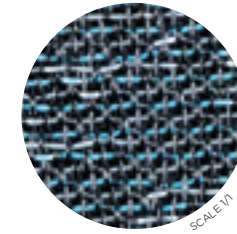


SCALE: 1/1

Aurora - Roll & Tile



SCALE: 1/12.5

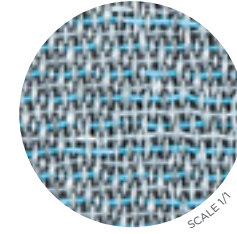


SCALE: 1/1

Equinox - Roll & Tile

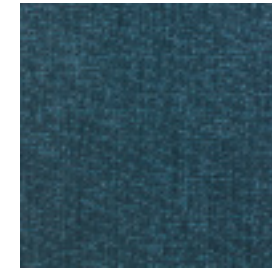


SCALE: 1/12.5

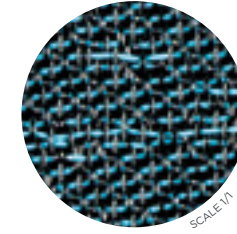


SCALE: 1/1

Pulsar - Roll & Tile



SCALE: 1/12.5



SCALE: 1/1



Moonrock Orange - Roll & Tile



SCALE: 1/12.5

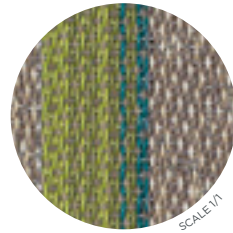


SCALE: 1/1

Moonrock Green - Roll & Tile



SCALE: 1/12.5

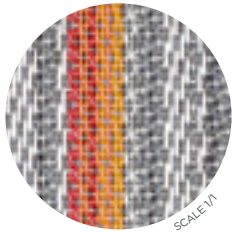


SCALE: 1/1

Diamond Orange - Roll & Tile



SCALE: 1/12.5

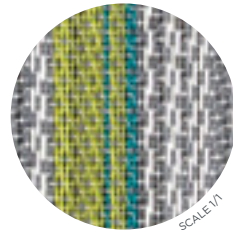


SCALE: 1/1

Diamond Green - Roll & Tile



SCALE: 1/12.5

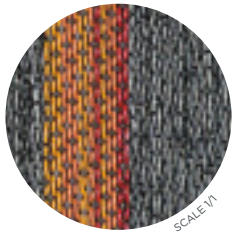


SCALE: 1/1

Moonless Night Orange - Roll & Tile



SCALE: 1/12.5 SCALE:

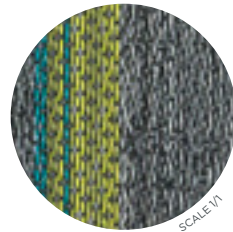


SCALE: 1/1

Moonless Night Green - Roll & Tile



SCALE: 1/12.5

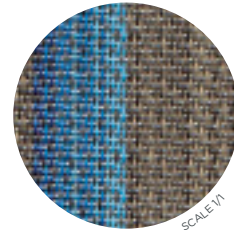


SCALE: 1/1

Flint Blue - Roll & Tile



SCALE: 1/12.5

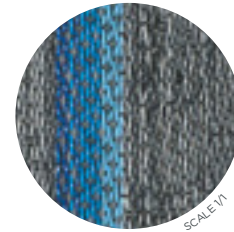


SCALE: 1/1

Moonless Night Blue - Roll & Tile

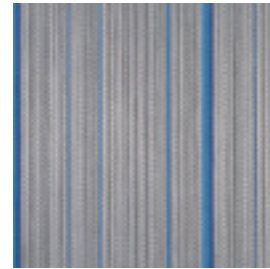


SCALE: 1/12.5

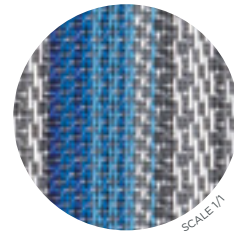


SCALE: 1/1

Diamond Blue - Roll & Tile




















SCALE: 1/12.5



SCALE: 1/1



TECHNICAL INFO

Warranty		10 years*
Composition		83% vinyl - 7% fiberglass 10% PET
Backing		Vinyl + Felt
 Total thickness	ISO 1765	5mm 0.20"
 Total weight	ISO 8543	3000 g/m ² 88.5 oz/yd ²
 Roll width	EN ISO 24341	ca. 200cm ca. 6'7"
 Roll length	EN ISO 24341	ca. 30m 32.8 yd
 Tile size 16 pcs per box	EN 994	50cm x 50cm 19.69" x 19.69"
 Level of Use	EN 1307 ASTM D5252	Class 33 Heavy commercial use
Foot traffic test	ASTM D6119-12	Heavy traffic
 Castor chair suitability	EN 985	Continuous use
 Reaction to fire	EN 13501-1	Bfl-s1
Critical radiant flux	ASTM E648-15e1 NFPA	0,84 W/cm ² Class I
Smoke density	ASTM E622	< 300
 Walking test	ISO 6356 AATCC 134-2006	< 2 kv Permanently antistatic
 Light fastness	ISO 105-B02	≥ 7
 Slip resistance	EN 13893 ASTM C1028-07 DIN 51130 EM 13036-4	≥ 0,3 0,85 R9 65
 Impact sound reduction	ISO 10140	19dB
 Acoustical absorption	ISO 354	αw = 0,15
 Walking noise reduction	EPLF 021029-3	SL70
 Dimensional stability	EN 986 ISO 2551	Meets the requirements
 Thermal resistance	ISO 8302	Suitable for underfloor heating
 CE Certificate	EN 14041	0493-CPR-0151

Environment, health and safety

Recycled Content	10%
Reach	Compliant
LEED v4	Compliant (LEED Contributing Product)
BREEAM International	Compliant
BREEAM® NOR	Pass
French VOC Regulation	A+ Certified
AGBB/ABG	Pass
Belgian VOC Regulation	Pass
Indoor Air Comfort Gold	Pass
Blue Agel (RAL VZ120)	Pass
EN 717-1	E1
Plasticizer Content	Phthalate Free**



CO2 neutral on demand - *Terms and conditions are available on request - **Standard from 09/2018

2TEC2
HEADQUARTERS

284, Chaussée d'Aelbeke
7700 Mouscron, Belgium
T +32 (0)56 85 47 47
info@2tec2.com - 2tec2.com

www.2tec2.com