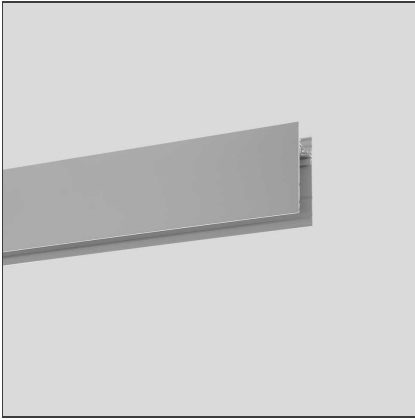


## A. Sharping Structural Module Suspension, Ceiling, Wall - 4736mm White



### DESIGN BY

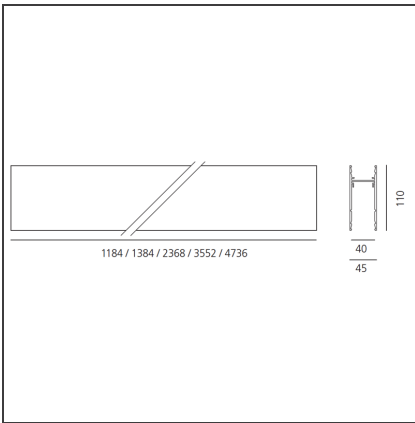
Carlotta de Bevilacqua

### DESCRIPTION

Algoritmo Sharping is very flexible and it allows to combine in continuity Sharp light modules, with indirect and diffused LED lighting in warm white (3000K) and neutral white (4000K). Structural modules are in extruded aluminum, available in different lengths depending on the installation option, three finishes (white, black, silver or gloss anodized), two optic finishes (black and white) and three beams (17°, 34° and 54°).



### TECHNICAL DRAWINGS



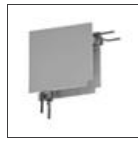
### FEATURES

|                      |                              |                |        |
|----------------------|------------------------------|----------------|--------|
| <b>Article Code:</b> | M199520                      | <b>Series:</b> | Indoor |
| <b>Colour:</b>       | White                        |                |        |
| <b>Installation:</b> | Wall, Suspension,<br>Ceiling |                |        |
| <b>Environment:</b>  | Indoor                       |                |        |

### DIMENSIONS

|                |        |
|----------------|--------|
| <b>Length:</b> | cm 473 |
|----------------|--------|

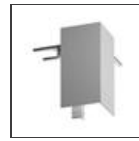
**ACCESSORIES**



90° angle to mechanically connect of 2 modules on one same plane. Includes through-wire extensions. 0.60 kg. white M196720



Suspension kit with power supply. Includes 1 single steel suspension cable + 1 power supply cable Length 2 meters. MV (5x1,5mm<sup>2</sup>+2x0,5mm<sup>2</sup>) To power fluorescent modules, white LED plates and accent modules. M189300



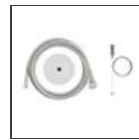
90° angle to mechanically connect two recessed modules on one same plane. 0.30 kg. white M196820



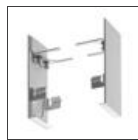
Linear connector M189000



Bracket for fixing to wall/ceiling (1 piece) M199400



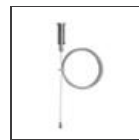
Suspension kit with power supply. Includes 1 single steel suspension cable + 1 power supply cable Length 2 meters. LV (3x1,5mm<sup>2</sup>) For supplying LED modules RGB. M189200



End caps (set of 2) white M188820



Wall bracket To mechanically connect a wall-mounted module. M199300



Steel suspension cable with quick adjustment Length 2 meters M189100