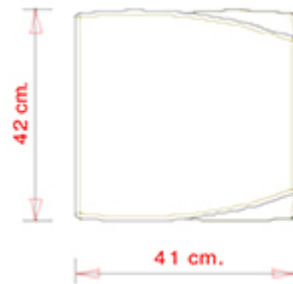
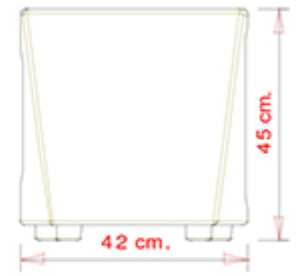
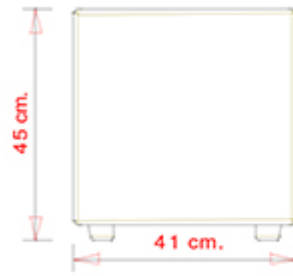


## Boom P0007

BOOM COLLECTION:  
Boom P0007, Boom P0008,



Upholstered pouf.

**WEIGHT**

8,5 kg

**PACK**

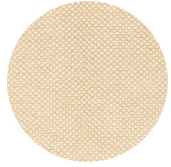
0,18 m<sup>3</sup>

**PIECES PER BOX**

2

## FINISHES SEATING

### TE FABRICS



Sawana Davis  
+ 24 colours



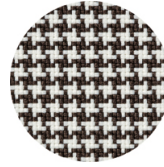
Citadel Camira  
+ 16 colours



Medley Gabriel  
+ 14 colours



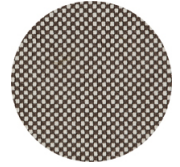
Inca Abitex  
+ 15 colours



Go-Couture Gabriel  
+ 8 colours



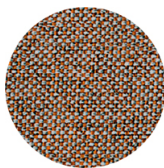
Crazy Flukso  
+ 7 colours



Go-Check Gabriel  
+ 13 colours



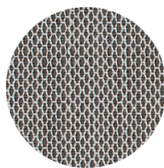
Xtreme Camira  
+ 16 colours



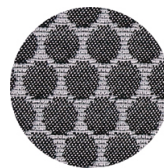
Rivet Camira  
+ 12 colours



Valencia Spradling  
+ 17 colours



Criss Cross Gabriel  
+ 19 colours



Bubble Flukso  
+ 9 colours



Europost 2 Gabriel  
+ 16 colours



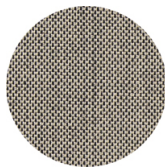
Fame Gabriel  
+ 23 colours



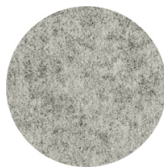
Parotega NF  
Skai Hornschuch  
+ 8 colours



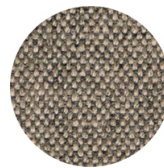
Superb Flukso  
+ 13 colours



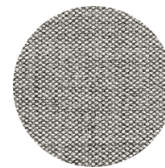
Balta Vescom  
+ 12 colours



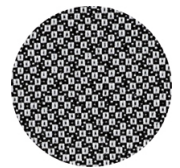
Blazer Camira  
+ 25 colours



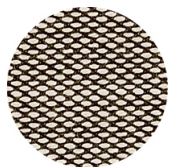
Main line flax Camira  
+ 13 colours



Remix 2 Kvadrat  
+ 18 colours



Revive 2 Kvadrat  
+ 7 colours



Steelcut trio 3 Kvadrat  
+ 20 colours

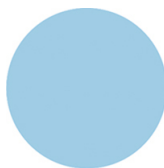
### PE ROTO-MOULDED POLYETHYLENE



PANTONE 427 C Ice white



RAL 8017 Chocolate  
brown



NCS S0530-R90B Sky-  
blue



RAL 5021 Water blue

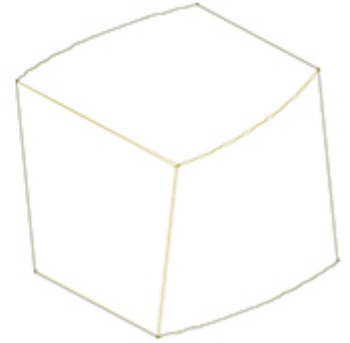
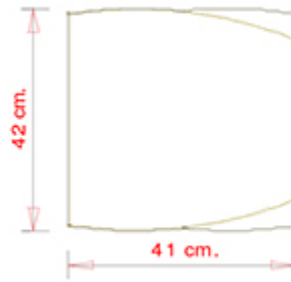
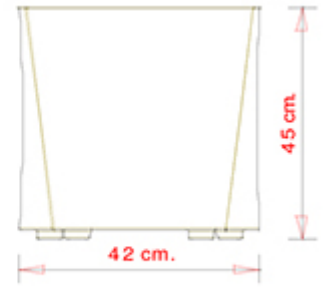
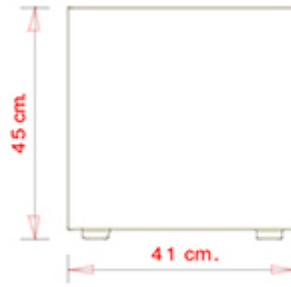
## **USES**

---

coffee & restaurants, hotels, educational, entertainment, travel, office and waiting areas, retail, health care,

## Boom P0008

BOOM COLLECTION:  
Boom P0007, Boom P0008,



Pouf in polyethylene, rotational moulding.

### WEIGHT

4 kg

### PACK

0,16 m<sup>3</sup>

### PIECES PER BOX

2

## FINISHES SEATING

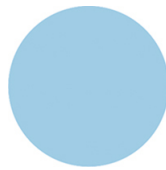
### PE ROTO-MOULDING POLYETHYLENE



PANTONE 427 C Ice white



RAL 8017 Chocolate brown



NCS S0530-R90B Sky-blue



RAL 5021 Water blue

## USES

coffee & restaurants, hotels, educational, entertainment, travel, office and waiting areas, retail, health care,