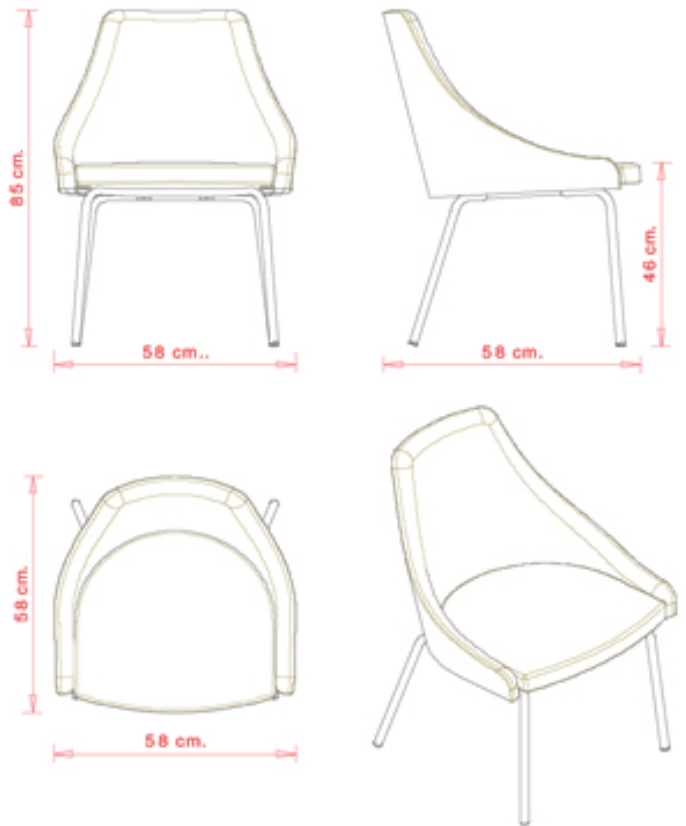


## Kontea 586

### KONTEA COLLECTION:

Kontea 586, Kontea 587, Kontea 588, Kontea 590, Kontea 307, Kontea 310,



Armchair with 4 legs steel frame and upholstered seat and back.

#### WEIGHT

9 kg

#### PACK

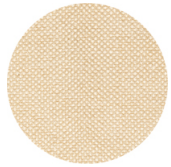
0,34 m<sup>3</sup>

#### PIECES PER BOX

1

## FINISHES SEATING

### TE FABRICS



Sawana Davis  
+ 24 colours



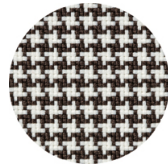
Citadel Camira  
+ 16 colours



Medley Gabriel  
+ 14 colours



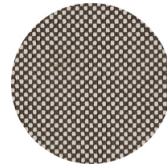
Inca Abitex  
+ 15 colours



Go-Couture Gabriel  
+ 8 colours



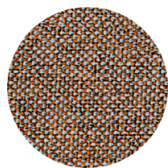
Crazy Flukso  
+ 7 colours



Go-Check Gabriel  
+ 13 colours



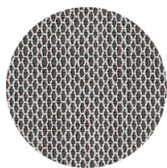
Xtreme Camira  
+ 16 colours



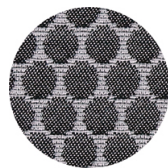
Rivet Camira  
+ 12 colours



Valencia Spradling  
+ 17 colours



Criss Cross Gabriel  
+ 19 colours



Bubble Flukso  
+ 9 colours



Europost 2 Gabriel  
+ 16 colours



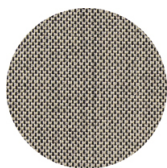
Fame Gabriel  
+ 23 colours



Parotega NF  
Skai Hornschuch  
+ 8 colours



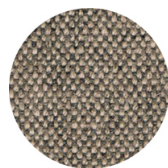
Superb Flukso  
+ 13 colours



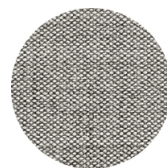
Balta Vescom  
+ 12 colours



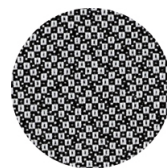
Blazer Camira  
+ 25 colours



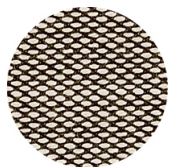
Main line flax Camira  
+ 13 colours



Remix 2 Kvadrat  
+ 18 colours



Revive 2 Kvadrat  
+ 7 colours



Steelcut trio 3 Kvadrat  
+ 20 colours

## FRAMES

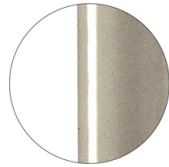
### AC STEEL



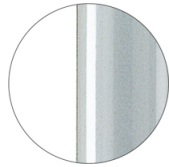
RAL 9016  
VR Traffic white



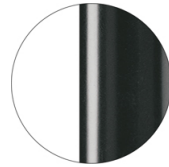
RAL 9010  
VR Pure white



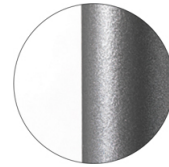
PANTONE 402 C  
VR Turtle-dove



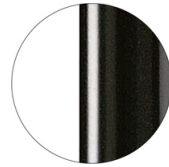
RAL 9006  
VR White aluminium



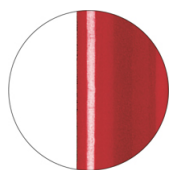
RAL 7016  
VR Anthracite grey



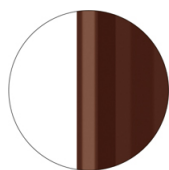
VR Pewter



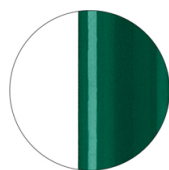
RAL 9005  
VR Jet black



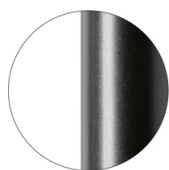
RAL 3003  
VR Ruby red



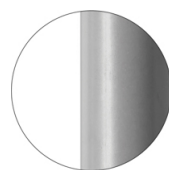
RAL 8017  
VR Chocolate brown



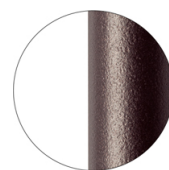
RAL 6005  
VR Moss green



RAL 9005  
VR Matt Jet Black



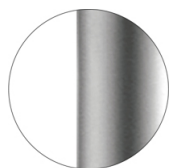
RAL 7037  
VR Matt Dusty grey



VR Rough metallic  
bronze



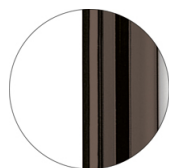
CR Chrome



CR S Satin chrome



CR X Brass chrome



CR X Burnished chrome

## CERTIFICATIONS

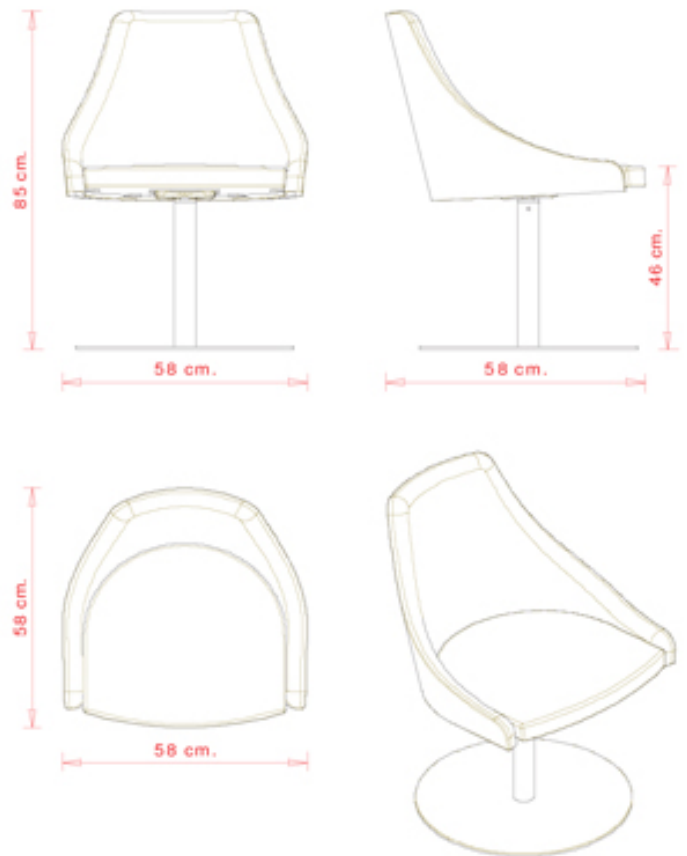
- > UNI/EN 16139:2013 - Prova 12. Prova di carico statico gambe anteriori: 2-Uso estremo (08/03/16)
- > UNI/EN 16139:2013 - Prova 13. Prova di carico statico gambe laterali: 2-Uso estremo (08/03/16)
- > UNI/EN 16139:2013 - Prova 14. Prova di urto sul sedile: 2-Uso estremo (08/03/16)

## USES

coffee & restaurants, hotels, educational, entertainment, travel, office and waiting areas, retail, health care,

## Kontea 587

KONTEA COLLECTION:  
Kontea 586, Kontea 587, Kontea 588, Kontea 590, Kontea 307,  
Kontea 310,



Swivel armchair with central steel base and upholstered seat and back.

### WEIGHT

20 kg

### PACK

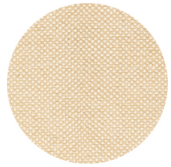
0,34 m<sup>3</sup>

### PIECES PER BOX

1

## FINISHES SEATING

### TE FABRICS



Sawana Davis  
+ 24 colours



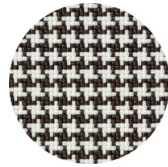
Citadel Camira  
+ 16 colours



Medley Gabriel  
+ 14 colours



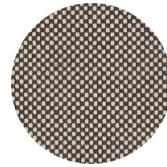
Inca Abitex  
+ 15 colours



Go-Couture Gabriel  
+ 8 colours



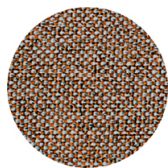
Crazy Flukso  
+ 7 colours



Go-Check Gabriel  
+ 13 colours



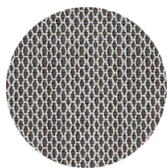
Xtreme Camira  
+ 16 colours



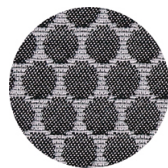
Rivet Camira  
+ 12 colours



Valencia Spradling  
+ 17 colours



Criss Cross Gabriel  
+ 19 colours



Bubble Flukso  
+ 9 colours



Europost 2 Gabriel  
+ 16 colours



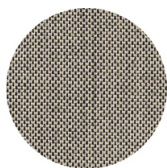
Fame Gabriel  
+ 23 colours



Parotega NF  
Skai Hornschuch  
+ 8 colours



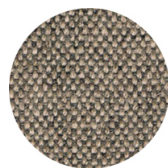
Superb Flukso  
+ 13 colours



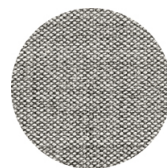
Balta Vescom  
+ 12 colours



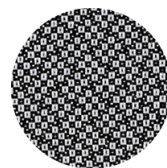
Blazer Camira  
+ 25 colours



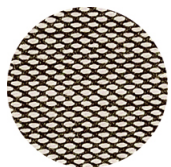
Main line flax Camira  
+ 13 colours



Remix 2 Kvadrat  
+ 18 colours



Revive 2 Kvadrat  
+ 7 colours



Steelcut trio 3 Kvadrat  
+ 20 colours



## FRAMES

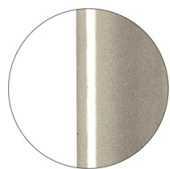
### AC STEEL



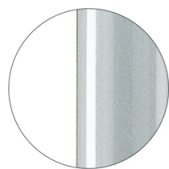
RAL 9016  
VR Traffic white



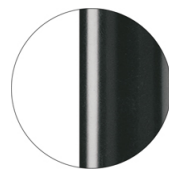
RAL 9010  
VR Pure white



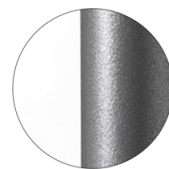
PANTONE 402 C  
VR Turtle-dove



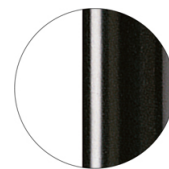
RAL 9006  
VR White aluminium



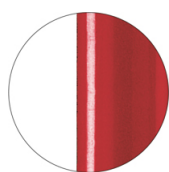
RAL 7016  
VR Anthracite grey



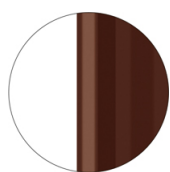
VR Pewter



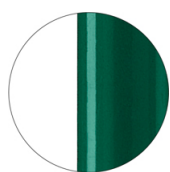
RAL 9005  
VR Jet black



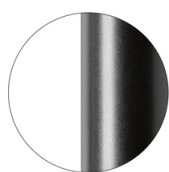
RAL 3003  
VR Ruby red



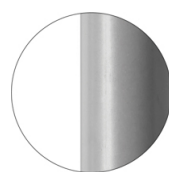
RAL 8017  
VR Chocolate brown



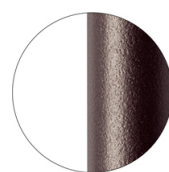
RAL 6005  
VR Moss green



RAL 9005  
VR Matt Jet Black



RAL 7037  
VR Matt Dusty grey



VR Rough metallic  
bronze



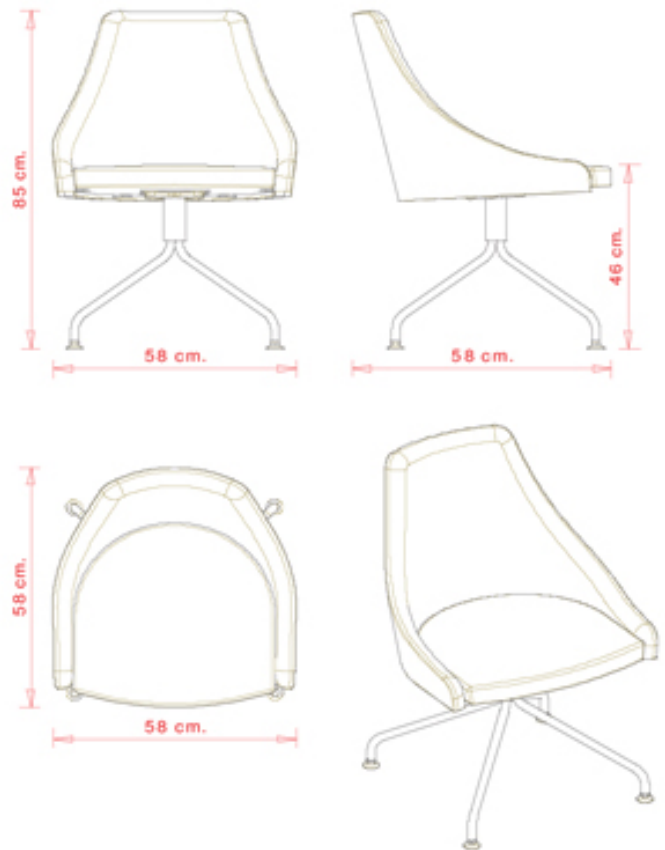
CR Chrome

## USES

coffee & restaurants, hotels, educational, entertainment, travel, office and waiting areas, retail, health care,

## Kontea 588

KONTEA COLLECTION:  
Kontea 586, Kontea 587, Kontea 588, Kontea 590, Kontea 307,  
Kontea 310,



Armchair with 4 ways steel frame. Upholstered seat and back.

### WEIGHT

9 kg

### PACK

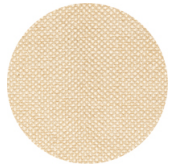
0,34 m<sup>3</sup>

### PIECES PER BOX

1

## FINISHES SEATING

### TE FABRICS



Sawana Davis  
+ 24 colours



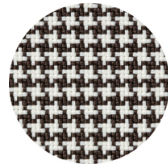
Citadel Camira  
+ 16 colours



Medley Gabriel  
+ 14 colours



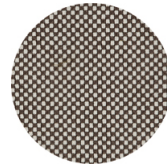
Inca Abitex  
+ 15 colours



Go-Couture Gabriel  
+ 8 colours



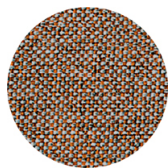
Crazy Flukso  
+ 7 colours



Go-Check Gabriel  
+ 13 colours



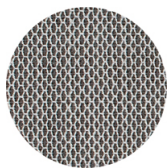
Xtreme Camira  
+ 16 colours



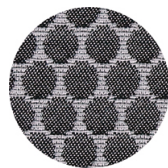
Rivet Camira  
+ 12 colours



Valencia Spradling  
+ 17 colours



Criss Cross Gabriel  
+ 19 colours



Bubble Flukso  
+ 9 colours



Europost 2 Gabriel  
+ 16 colours



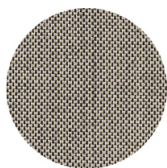
Fame Gabriel  
+ 23 colours



Parotega NF  
Skai Hornschuch  
+ 8 colours



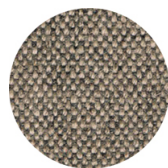
Superb Flukso  
+ 13 colours



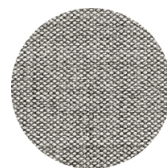
Balta Vescom  
+ 12 colours



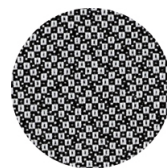
Blazer Camira  
+ 25 colours



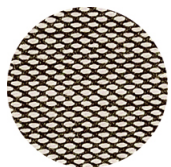
Main line flax Camira  
+ 13 colours



Remix 2 Kvadrat  
+ 18 colours



Revive 2 Kvadrat  
+ 7 colours



Steelcut trio 3 Kvadrat  
+ 20 colours



## FRAMES

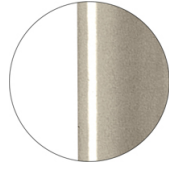
### AC STEEL



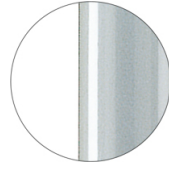
RAL 9016  
VR Traffic white



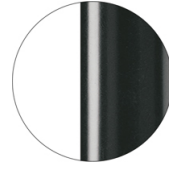
RAL 9010  
VR Pure white



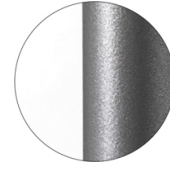
PANTONE 402 C  
VR Turtle-dove



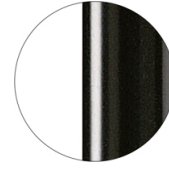
RAL 9006  
VR White aluminium



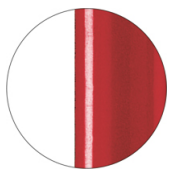
RAL 7016  
VR Anthracite grey



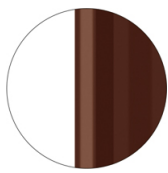
VR Pewter



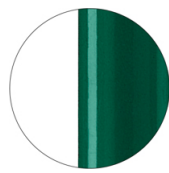
RAL 9005  
VR Jet black



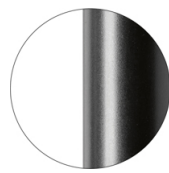
RAL 3003  
VR Ruby red



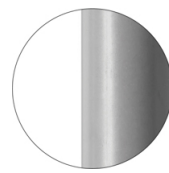
RAL 8017  
VR Chocolate brown



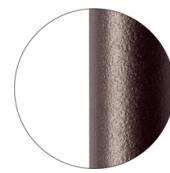
RAL 6005  
VR Moss green



RAL 9005  
VR Matt Jet Black



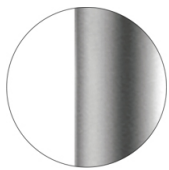
RAL 7037  
VR Matt Dusty grey



VR Rough metallic  
bronze



CR Chrome



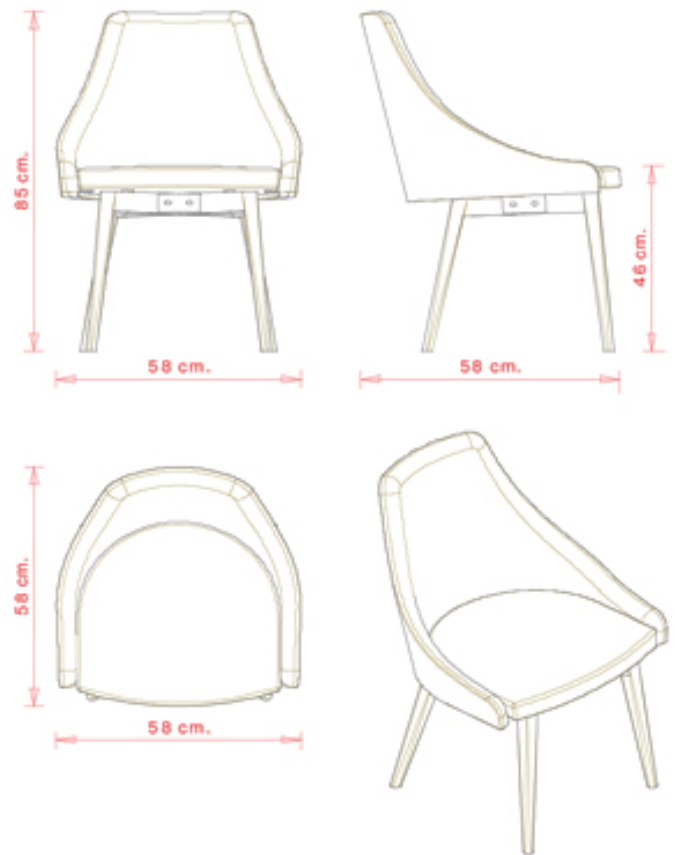
CR S Satin chrome

## USES

coffee & restaurants, hotels, educational, entertainment, travel, office and waiting areas, retail, health care,

## Kontea 590

KONTEA COLLECTION:  
Kontea 586, Kontea 587, Kontea 588, Kontea 590, Kontea 307,  
Kontea 310,



Armchair with beech wood frame, 4 legs. Upholstered seat and back.

**WEIGHT**

9,4 kg

**PACK**

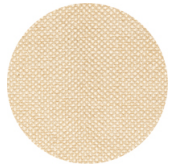
0,34 m<sup>3</sup>

**PIECES PER BOX**

1

## FINISHES SEATING

### TE FABRICS



Sawana Davis  
+ 24 colours



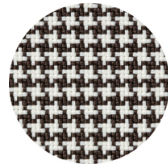
Citadel Camira  
+ 16 colours



Medley Gabriel  
+ 14 colours



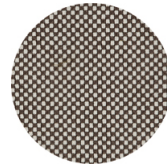
Inca Abitex  
+ 15 colours



Go-Couture Gabriel  
+ 8 colours



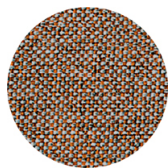
Crazy Flukso  
+ 7 colours



Go-Check Gabriel  
+ 13 colours



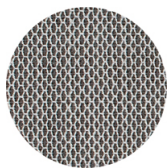
Xtreme Camira  
+ 16 colours



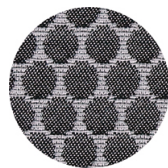
Rivet Camira  
+ 12 colours



Valencia Spradling  
+ 17 colours



Criss Cross Gabriel  
+ 19 colours



Bubble Flukso  
+ 9 colours



Europost 2 Gabriel  
+ 16 colours



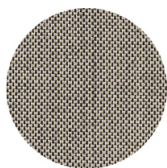
Fame Gabriel  
+ 23 colours



Parotega NF  
Skai Hornschuch  
+ 8 colours



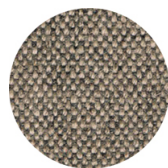
Superb Flukso  
+ 13 colours



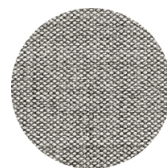
Balta Vescom  
+ 12 colours



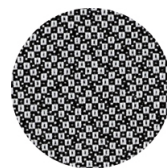
Blazer Camira  
+ 25 colours



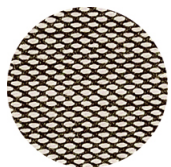
Main line flax Camira  
+ 13 colours



Remix 2 Kvadrat  
+ 18 colours



Revive 2 Kvadrat  
+ 7 colours



Steelcut trio 3 Kvadrat  
+ 20 colours

---

## FRAMES

---

### LE WOOD



Maple stained beech wood



Natural beech wood



Wengé stained beech wood



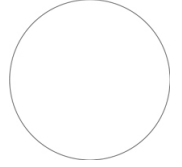
Black stained beech wood



"Canaletto" walnut stained beech wood



Oak stained beech wood



Stained according to sample

## USES

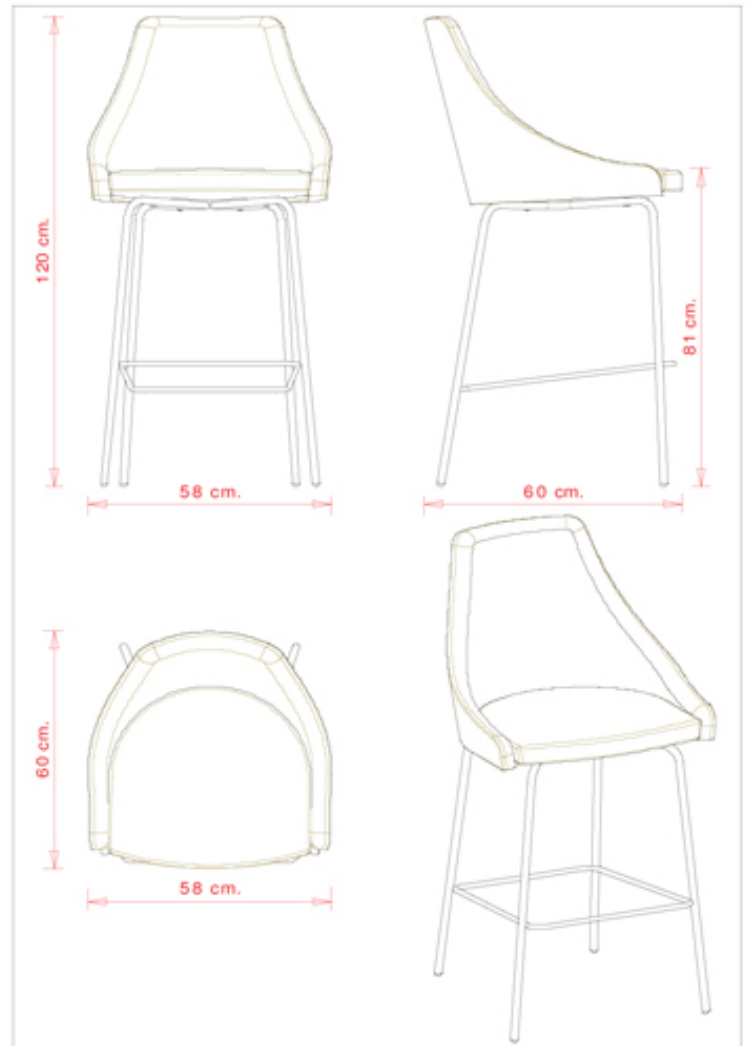
---

coffee & restaurants, hotels, educational, entertainment, travel, office and waiting areas, retail, health care,

## Kontea 307

### KONTEA COLLECTION:

Kontea 586, Kontea 587, Kontea 588, Kontea 590, Kontea 307, Kontea 310,



Barstool with 4 legs steel frame. Upholstered seat and back.

#### WEIGHT

9,3 kg

#### PACK

0,44 m<sup>3</sup>

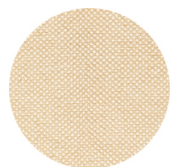
#### PIECES PER BOX

1



## FINISHES SEATING

### TE FABRICS



Sawana Davis  
+ 24 colours



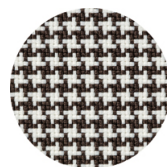
Citadel Camira  
+ 16 colours



Medley Gabriel  
+ 14 colours



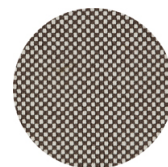
Inca Abitex  
+ 15 colours



Go-Couture Gabriel  
+ 8 colours



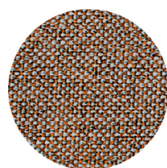
Crazy Flukso  
+ 7 colours



Go-Check Gabriel  
+ 13 colours



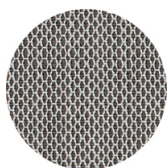
Xtreme Camira  
+ 16 colours



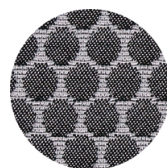
Rivet Camira  
+ 12 colours



Valencia Spradling  
+ 17 colours



Criss Cross Gabriel  
+ 19 colours



Bubble Flukso  
+ 9 colours



Europost 2 Gabriel  
+ 16 colours



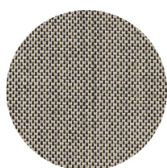
Fame Gabriel  
+ 23 colours



Parotega NF  
Skai Hornschuch  
+ 8 colours



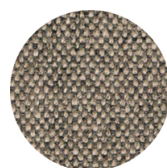
Superb Flukso  
+ 13 colours



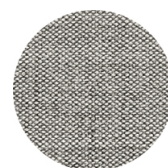
Balta Vescom  
+ 12 colours



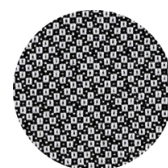
Blazer Camira  
+ 25 colours



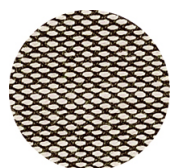
Main line flax Camira  
+ 13 colours



Remix 2 Kvadrat  
+ 18 colours



Revive 2 Kvadrat  
+ 7 colours



Steelcut trio 3 Kvadrat  
+ 20 colours

## FRAMES

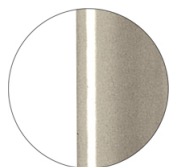
### AC STEEL



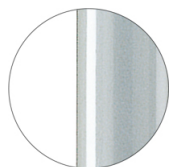
RAL 9016  
VR Traffic white



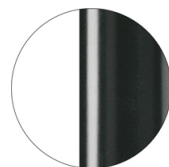
RAL 9010  
VR Pure white



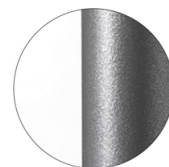
PANTONE 402 C  
VR Turtle-dove



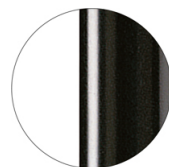
RAL 9006  
VR White aluminium



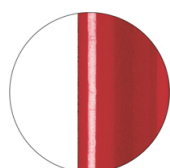
RAL 7016  
VR Anthracite grey



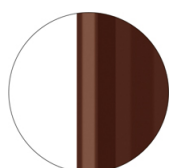
VR Pewter



RAL 9005  
VR Jet black



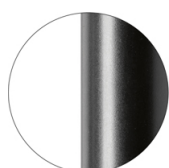
RAL 3003  
VR Ruby red



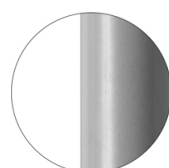
RAL 8017  
VR Chocolate brown



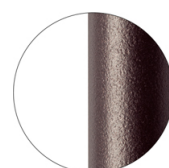
RAL 6005  
VR Moss green



RAL 9005  
VR Matt Jet Black



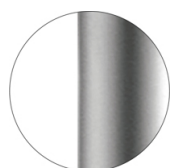
RAL 7037  
VR Matt Dusty grey



VR Rough metallic  
bronze



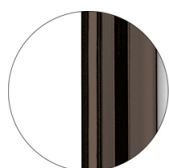
CR Chrome



CR S Satin chrome



CR X Brass chrome



CR X Burnished chrome

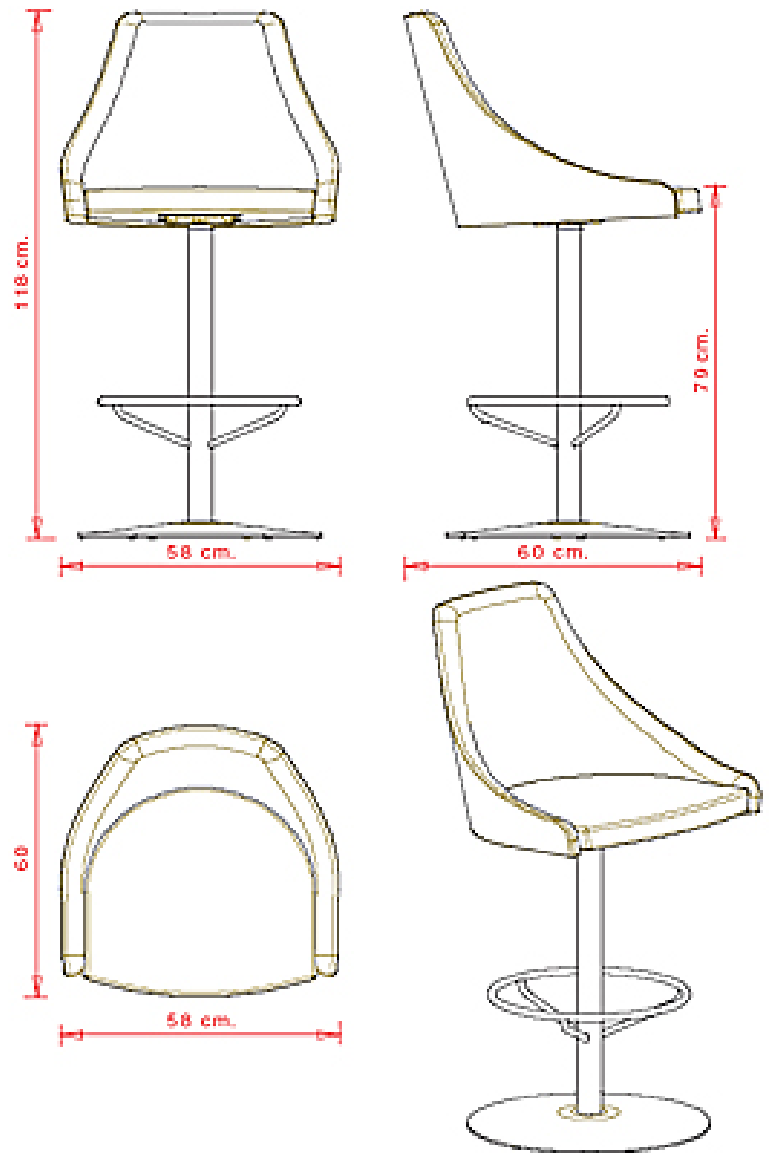
## USES

coffee & restaurants, hotels, educational, entertainment, travel, office and waiting areas, retail, health care,

## Kontea 310

### KONTEA COLLECTION:

Kontea 586, Kontea 587, Kontea 588, Kontea 590, Kontea 307, Kontea 310,



Swivel stool with central steel frame. Upholstered seat and backrest.

#### WEIGHT

21,2 kg

#### PACK

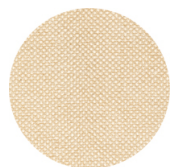
0,43 m<sup>3</sup>

#### PIECES PER BOX

1

## FINISHES SEATING

### TE FABRICS



Sawana Davis  
+ 24 colours



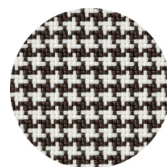
Citadel Camira  
+ 16 colours



Medley Gabriel  
+ 14 colours



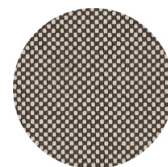
Inca Abitex  
+ 15 colours



Go-Couture Gabriel  
+ 8 colours



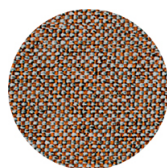
Crazy Flukso  
+ 7 colours



Go-Check Gabriel  
+ 13 colours



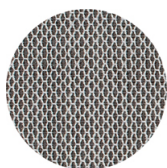
Xtreme Camira  
+ 16 colours



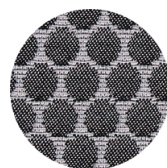
Rivet Camira  
+ 12 colours



Valencia Spradling  
+ 17 colours



Criss Cross Gabriel  
+ 19 colours



Bubble Flukso  
+ 9 colours



Europost 2 Gabriel  
+ 16 colours



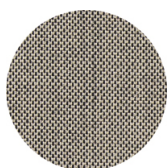
Fame Gabriel  
+ 23 colours



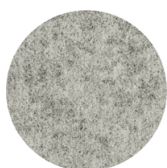
Parotega NF  
Skai Hornschuch  
+ 8 colours



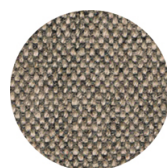
Superb Flukso  
+ 13 colours



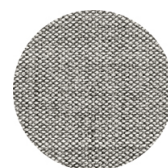
Balta Vescom  
+ 12 colours



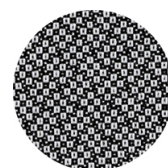
Blazer Camira  
+ 25 colours



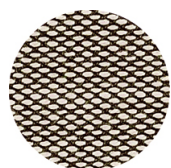
Main line flax Camira  
+ 13 colours



Remix 2 Kvadrat  
+ 18 colours



Revive 2 Kvadrat  
+ 7 colours



Steelcut trio 3 Kvadrat  
+ 20 colours

## FRAMES

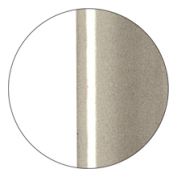
### AC STEEL



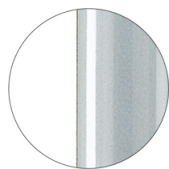
RAL 9016  
VR Traffic white



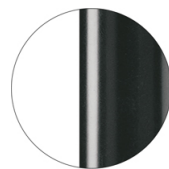
RAL 9010  
VR Pure white



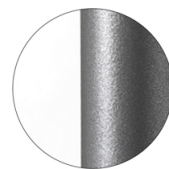
PANTONE 402 C  
VR Turtle-dove



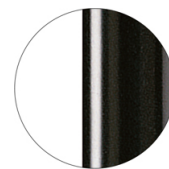
RAL 9006  
VR White aluminium



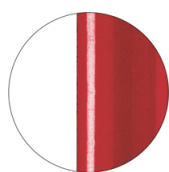
RAL 7016  
VR Anthracite grey



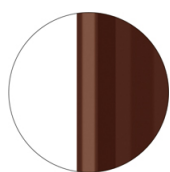
VR Pewter



RAL 9005  
VR Jet black



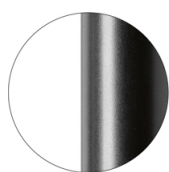
RAL 3003  
VR Ruby red



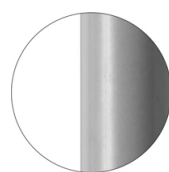
RAL 8017  
VR Chocolate brown



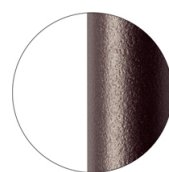
RAL 6005  
VR Moss green



RAL 9005  
VR Matt Jet Black



RAL 7037  
VR Matt Dusty grey



VR Rough metallic  
bronze



CR Chrome

## USES

coffee & restaurants, hotels, educational, entertainment, travel, office and waiting areas, retail, health care,