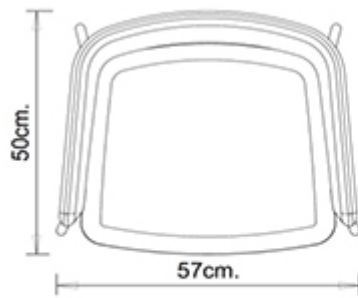
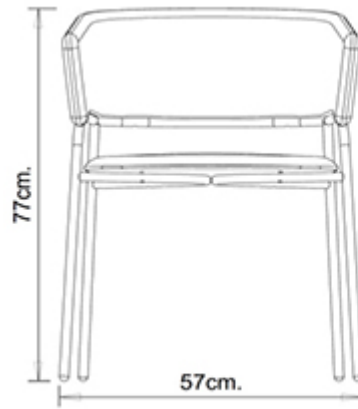


Play 538

PLAY COLLECTION:
Play 538,



DESIGNER-ARMLEHNSTUHL:

Armlehnstuhl mit 4-beinigem Stahlgestell. Gepolsterte Sitzfläche und Rückenlehne. Bezug aus Stoff.

GEWICHT

7,7 Kg

VERPACKUNG

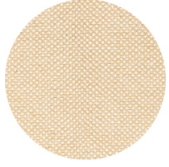
0,26 m³

STÜCK PRO KARTON

1

MATERIALEN SITZFLÄCHEN

TE STOFFE



Sawana Davis
+ 24 Farben



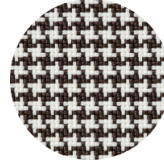
Citadel Camira
+ 16 Farben



Medley Gabriel
+ 14 Farben



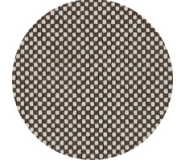
Inca Abitex
+ 15 Farben



Go-Couture Gabriel
+ 8 Farben



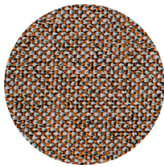
Crazy Flukso
+ 7 Farben



Go-Check Gabriel
+ 13 Farben



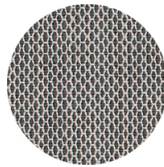
Xtreme Camira
+ 16 Farben



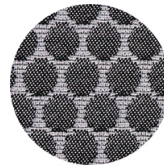
Rivet Camira
+ 12 Farben



Valencia Spradling
+ 17 Farben



Criss Cross Gabriel
+ 19 Farben



Bubble Flukso
+ 9 Farben



Europost 2 Gabriel
+ 16 Farben



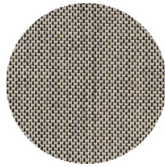
Fame Gabriel
+ 23 Farben



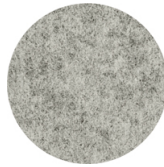
Parotega NF
Skai Hornschuch
+ 8 Farben



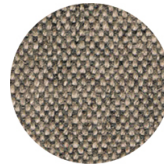
Superb Flukso
+ 13 Farben



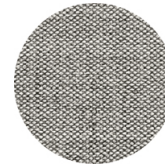
Balta Vescom
+ 12 Farben



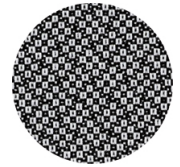
Blazer Camira
+ 25 Farben



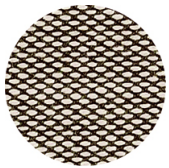
Main line flax camira
+ 13 Farben



Remix 2 Kvadrat
+ 18 Farben



Revive 2 Kvadrat
+ 7 Farben



Steecut trio 3 Kvadrat
+ 20 Farben

GESTELL

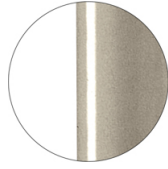
AC STAHL



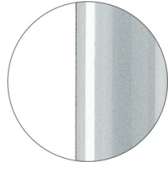
RAL 9016
VR Verkehrsweiß



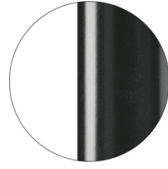
RAL 9010
VR Reinweiß



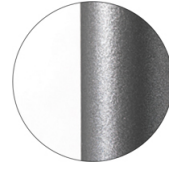
PANTONE 402 C
VR Taubengrau



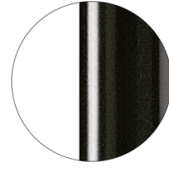
RAL 9006
VR Weißaluminium



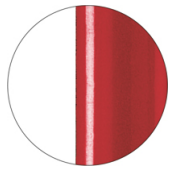
RAL 7016
VR Anthrazitgrau



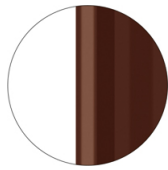
VR Zinn



RAL 9005
VR Tiefschwarz



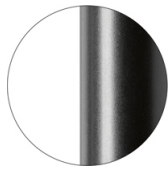
RAL 3003
VR Rubinrot



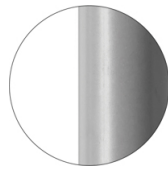
RAL 8017
VR
Schokoladenbraun



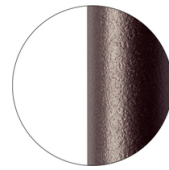
RAL 6005
VR Moosgrün



RAL 9005
VR Matt Tiefschwarz



RAL 7037
VR Matt Staubgrau



VR Rau Metallbronze



CR Verchromt

ZERTIFIZIERUNGEN

- > UNI/EN 16139:2013 - Par.4.1. Generale. 4.2 Cesoiamento (24/04/15)
- > UNI/EN 16139:2013 - Par.4.3. Stabilità (24/04/15)
- > UNI/EN 16139:2013 - Prova 1. Carico statico sedile e schienale: 2-Usò estremo (24/04/15)
- > UNI/EN 16139:2013 - Prova 10. Prova di fatica dei braccioli: 2-Usò estremo (24/04/15)
- > UNI/EN 16139:2013 - Prova 12. Carico statico gambe anteriori: 2-Usò estremo (24/04/15)
- > UNI/EN 16139:2013 - Prova 13. Carico statico gambe laterali: 1-Usò generale (14/05/15)
- > UNI/EN 16139:2013 - Prova 2. Carico statico sul fronte anteriore: 2-Usò estremo (24/04/15)
- > UNI/EN 16139:2013 - Prova 3. Carico verticale sullo schienale: 2-Usò estremo (24/04/15)
- > UNI/EN 16139:2013 - Prova 5. Carico statico laterale sui braccioli: 2-Usò estremo (24/04/15)
- > UNI/EN 16139:2013 - Prova 6. Carico statico verticale verso il basso sui braccioli: 2-Usò estremo (24/04/15)
- > UNI/EN 16139:2013 - Prova 8. Prova di fatica sedile e schienale: 2-Usò estremo (24/04/15)
- > UNI/EN 16139:2013 - Prova 9. Prova di fatica sul bordo anteriore: 2-Usò estremo (24/04/15)

VERWENDUNGSZWECK

Kaffeehäuser & Restaurants, Hotels, Bildungsbereich, Unterhaltungsbereich, Reisen, Büros und Warteräume, Retail, Gesundheitsbereich,