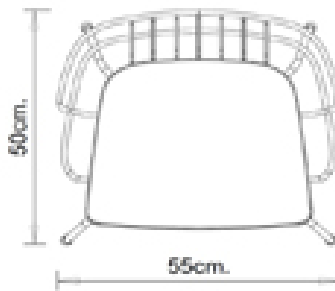
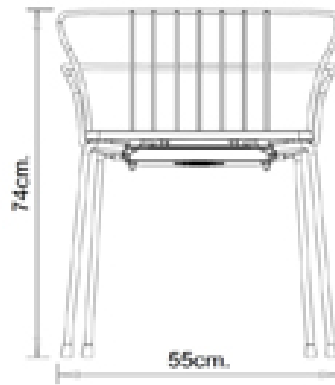


Flint 535-A

FLINT COLLECTION:

Flint 535-A, Flint 535-AM, Flint 535-B,
Flint 535-BM, Flint 549, Flint 549M,



Armchair, design Marc Sadler: 4-leg armchair with steel frame and backrest, polypropylene seat.

Special Edition Flint armchair: frame in Brass or bronze chrome steel and seat in Iroko wood or leather

STACKABLE

4

WEIGHT

6.5 Kg

PACK

0,39 m³

PIECES PER BOX

4

FINISHES SEATING

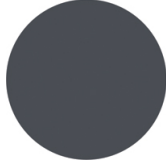
PP POLYPROPYLENE



RAL 9010 Pure white



PANTONE 402 C Turtle-dove



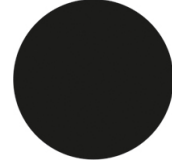
RAL 7016 Anthracite grey



RAL 3003 Ruby red



PANTONE 497 C Mocha



RAL 6005 Moss green

CU LEATHER



Black



Brick red



dark brown



Bordeaux

LE WOOD



Iroko

FRAMES

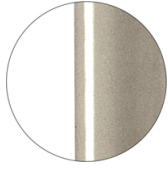
AC STEEL



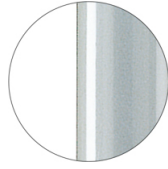
RAL 9016
VR Traffic white



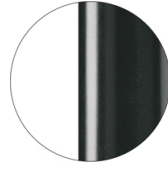
RAL 9010
VR Pure white



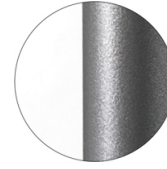
PANTONE 402 C
VR Turtle-dove



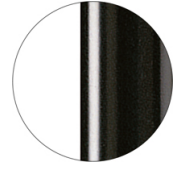
RAL 9006
VR White aluminium



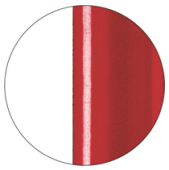
RAL 7016
VR Anthracite grey



VR Pewter



RAL 9005
VR Jet black



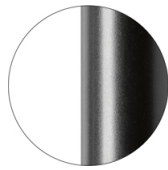
RAL 3003
VR Ruby red



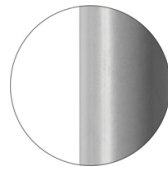
RAL 8017
VR Chocolate brown



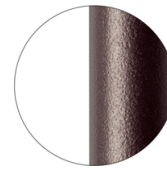
RAL 6005
VR Moss green



RAL 9005
VR Matt Jet Black



RAL 7037
VR Matt Dusty grey



VR Rough metallic
bronze



CR Chrome



CR X Brass chrome



CR X Burnished chrome

CERTIFICATIONS

- > UNI/EN 16139:2013 - Par.4.1. Generale. Par. 4.2. Cesoiamento (14/04/15)
- > UNI/EN 16139:2013 - Par.4.3. Stabilità (14/04/15) > UNI/EN 16139:2013 - Prova 1. Carico statico sedile e schienale: 2-Uso estremo (14/04/15)
- > UNI/EN 16139:2013 - Prova 2. Carico statico sul fronte anteriore: 2-Uso estremo (14/04/15) > UNI/EN 16139:2013 - Prova 3. Carico verticale sullo schienale: 2-Uso estremo (14/04/15)
- > UNI/EN 16139:2013 - Prova 5. Carico statico laterale sui braccioli: 2-Uso estremo (14/04/15)
- > UNI/EN 16139:2013 - Prova 6. Carico statico verticale verso il basso sui braccioli: 2-Uso estremo (14/04/15)
- > UNI/EN 16139:2013 - Prova 8. Prova di fatica sedile e schienale: 2-Uso estremo (15/07/15)

USES

coffee & restaurants, retail,

Flint 535-AM



FLINT COLLECTION:

Flint 535-A, Flint 535-AM, Flint 535-B, Flint 535-BM, Flint 549,
Flint 549M,



Armchair with 4 legs steel frame and backrest, upholstered seat.

WEIGHT

6,7 kg

PACK

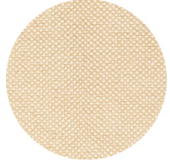
0,33 m³

PIECES PER BOX

2

FINISHES SEATING

TE FABRICS



Sawana Davis
+ 24 colours



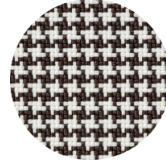
Citadel Camira
+ 16 colours



Medley Gabriel
+ 14 colours



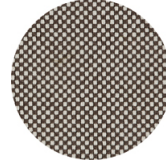
Inca Abitex
+ 15 colours



Go-Couture Gabriel
+ 8 colours



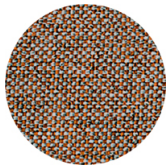
Crazy Flukso
+ 7 colours



Go-Check Gabriel
+ 13 colours



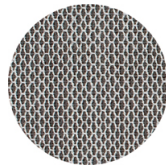
Xtreme Camira
+ 16 colours



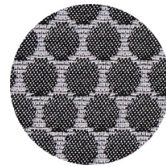
Rivet Camira
+ 12 colours



Valencia Spradling
+ 17 colours



Criss Cross Gabriel
+ 19 colours



Bubble Flukso
+ 9 colours



Europost 2 Gabriel
+ 16 colours



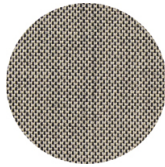
Fame Gabriel
+ 23 colours



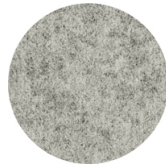
Parotega NF
Skai Hornschuch
+ 8 colours



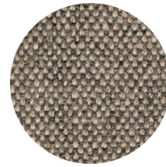
Superb Flukso
+ 13 colours



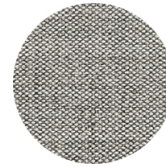
Balta Vescom
+ 12 colours



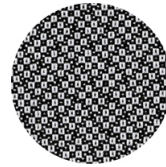
Blazer Camira
+ 25 colours



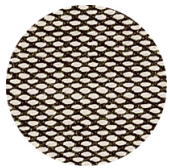
Main line flax Camira
+ 13 colours



Remix 2 Kvadrat
+ 18 colours



Revive 2 Kvadrat
+ 7 colours



Steelcut trio 3 Kvadrat
+ 20 colours

FRAMES

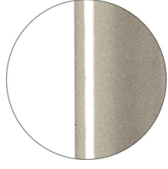
AC STEEL



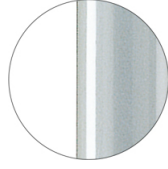
RAL 9016
VR Traffic white



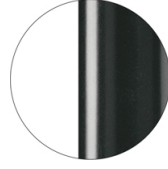
RAL 9010
VR Pure white



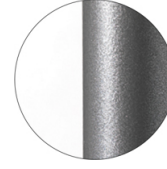
PANTONE 402 C
VR Turtle-dove



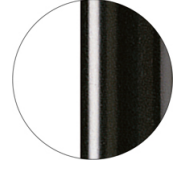
RAL 9006
VR White aluminium



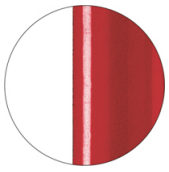
RAL 7016
VR Anthracite grey



VR Pewter



RAL 9005
VR Jet black



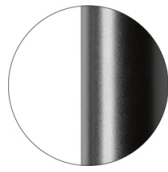
RAL 3003
VR Ruby red



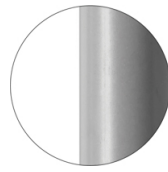
RAL 8017
VR Chocolate brown



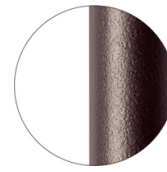
RAL 6005
VR Moss green



RAL 9005
VR Matt Jet Black



RAL 7037
VR Matt Dusty grey



VR Rough metallic
bronze



CR Chrome



CR X Brass chrome



CR X Burnished chrome

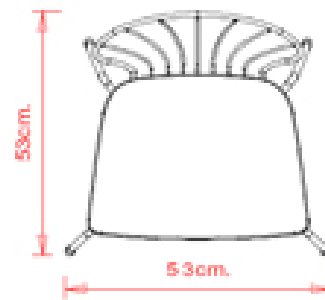
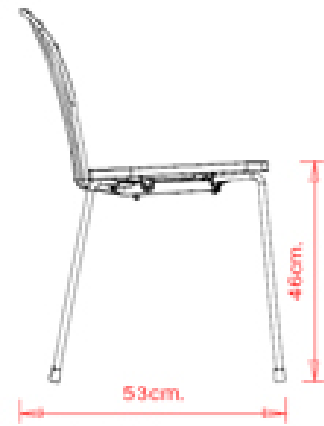
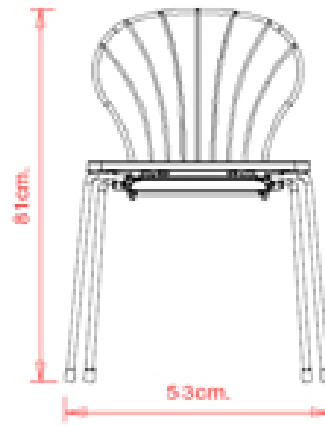
USES

coffee & restaurants, retail,

Flint 535-B

FLINT COLLECTION:

Flint 535-A, Flint 535-AM, Flint 535-B,
Flint 535-BM, Flint 549, Flint 549M,



Chair design Marc Sadler with polypropylene seat, backrest and 4-leg steel frame.

STACKABLE

4

WEIGHT

5,3 Kg

PACK

0,39 m₃

PIECES PER BOX

4

FINISHES SEATING

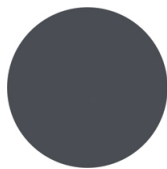
PP POLYPROPYLENE



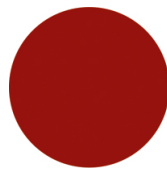
RAL 9010 Pure white



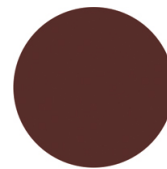
PANTONE 402 C Turtle-dove



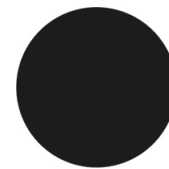
RAL 7016 Anthracite grey



RAL 3003 Ruby red



PANTONE 497 C Mocha



RAL 6005 Moss green

FRAMES

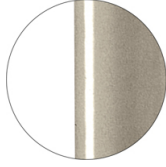
AC STEEL



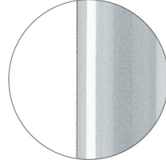
RAL 9016
VR Traffic white



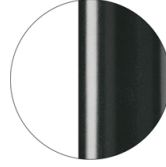
RAL 9010
VR Pure white



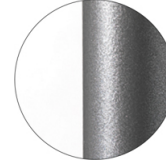
PANTONE 402 C
VR Turtle-dove



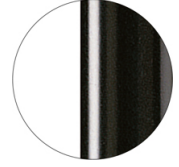
RAL 9006
VR White aluminium



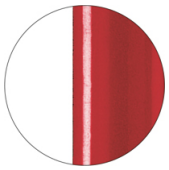
RAL 7016
VR Anthracite grey



VR Pewter



RAL 9005
VR Jet black



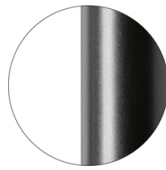
RAL 3003
VR Ruby red



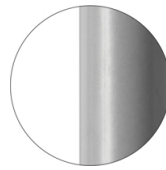
RAL 8017
VR Chocolate brown



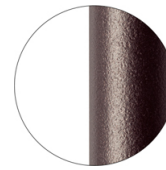
RAL 6005
VR Moss green



RAL 9005
VR Matt Jet Black



RAL 7037
VR Matt Dusty grey



VR Rough metallic
bronze



CR Chrome



CR X Brass chrome



CR X Burnished chrome

CERTIFICATIONS

- > UNI/EN 16139:2013 - Par.4.1. Generale. Par.4.2. Cesoiamento (07/07/15)
- > UNI/EN 16139:2013 - Par.4.3. Stabilità (07/07/15) > UNI/EN 16139:2013 - Prova 1. Carico statico sedile e schienale: 2-Uso estremo (07/07/15)
- > UNI/EN 16139:2013 - Prova 2. Carico statico sul fronte anteriore: 2-Uso estremo (07/07/15)
- > UNI/EN 16139:2013 - Prova 3. Carico verticale sullo schienale: 2-Uso estremo (07/07/15)
- > UNI/EN 16139:2013 - Prova 8. Prova di fatica sedile e schienale: 2-Uso estremo (07/07/15)
- > UNI/EN 16139:2013 - Prova 9. Prova di fatica sul bordo anteriore: 2-Uso estremo (07/07/15)

USES

coffee & restaurants, retail,

Flint 535-BM



FLINT COLLECTION:

Flint 535-A, Flint 535-AM, Flint 535-B, Flint 535-BM, Flint 549,
Flint 549M,



Chair with 4 legs steel frame and backrest, upholstered seat.

WEIGHT

5,5 kg

PACK

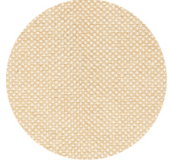
0,33 m³

PIECES PER BOX

2

FINISHES SEATING

TE FABRICS



Sawana Davis
+ 24 colours



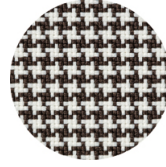
Citadel Camira
+ 16 colours



Medley Gabriel
+ 14 colours



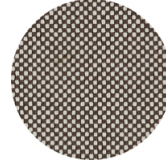
Inca Abitex
+ 15 colours



Go-Couture Gabriel
+ 8 colours



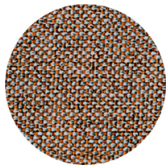
Crazy Flukso
+ 7 colours



Go-Check Gabriel
+ 13 colours



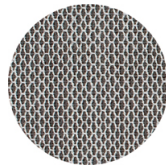
Xtreme Camira
+ 16 colours



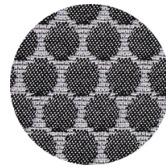
Rivet Camira
+ 12 colours



Valencia Spradling
+ 17 colours



Criss Cross Gabriel
+ 19 colours



Bubble Flukso
+ 9 colours



Europost 2 Gabriel
+ 16 colours



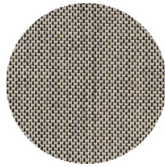
Fame Gabriel
+ 23 colours



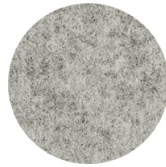
Parotega NF
Skai Hornschuch
+ 8 colours



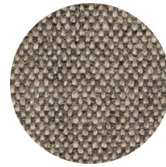
Superb Flukso
+ 13 colours



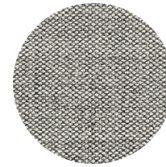
Balta Vescom
+ 12 colours



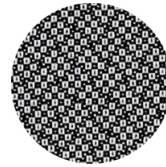
Blazer Camira
+ 25 colours



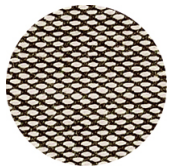
Main line flax Camira
+ 13 colours



Remix 2 Kvadrat
+ 18 colours



Revive 2 Kvadrat
+ 7 colours



Steelcut trio 3 Kvadrat
+ 20 colours

FRAMES

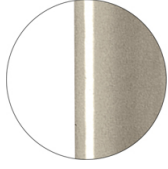
AC STEEL



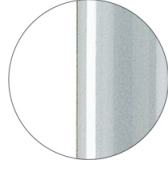
RAL 9016
VR Traffic white



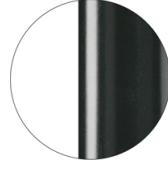
RAL 9010
VR Pure white



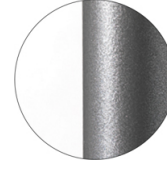
PANTONE 402 C
VR Turtle-dove



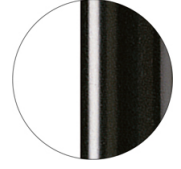
RAL 9006
VR White aluminium



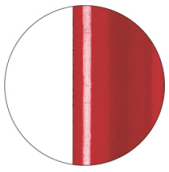
RAL 7016
VR Anthracite grey



VR Pewter



RAL 9005
VR Jet black



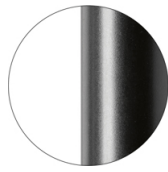
RAL 3003
VR Ruby red



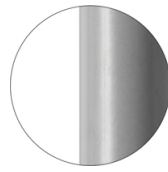
RAL 8017
VR Chocolate brown



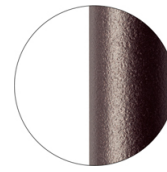
RAL 6005
VR Moss green



RAL 9005
VR Matt Jet Black



RAL 7037
VR Matt Dusty grey



VR Rough metallic
bronze



CR Chrome



CR X Brass chrome



CR X Burnished chrome

USES

coffee & restaurants, retail,

Flint 549



FLINT COLLECTION:

Flint 535-A, Flint 535-AM, Flint 535-B,
Flint 535-BM, Flint 549, Flint 549M,



Stool, design Marc Sadler. 4-leg stool with steel frame, polypropylene, leather or iroko seat.

STACKABLE

4

WEIGHT

5 kg

PACK

0,33 m³

PIECES PER BOX

2

FINISHES SEATING

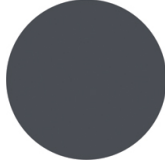
PP POLYPROPYLENE



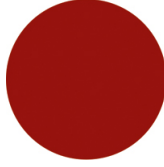
RAL 9010 Pure white



PANTONE 402 C Turtle-dove



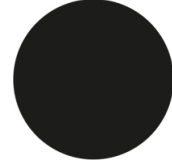
RAL 7016 Anthracite grey



RAL 3003 Ruby red



PANTONE 497 C Mocha



RAL 6005 Moss green

CU LEATHER



Black



Brick red



dark brown



Bordeaux

LE WOOD



Iroko

FRAMES

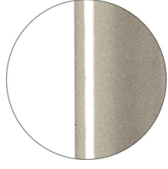
AC STEEL



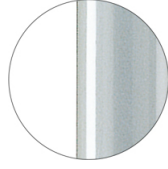
RAL 9016
VR Traffic white



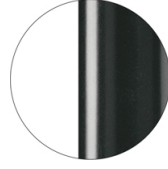
RAL 9010
VR Pure white



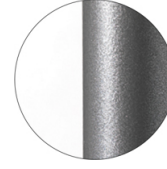
PANTONE 402 C
VR Turtle-dove



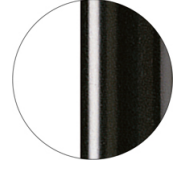
RAL 9006
VR White aluminium



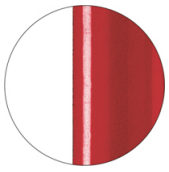
RAL 7016
VR Anthracite grey



VR Pewter



RAL 9005
VR Jet black



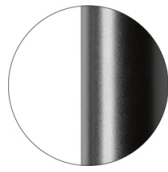
RAL 3003
VR Ruby red



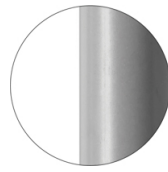
RAL 8017
VR Chocolate brown



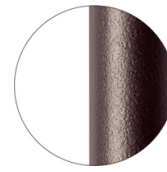
RAL 6005
VR Moss green



RAL 9005
VR Matt Jet Black



RAL 7037
VR Matt Dusty grey



VR Rough metallic
bronze



CR Chrome



CR X Brass chrome



CR X Burnished chrome

USES

coffee & restaurants, retail,

Flint 549M



FLINT COLLECTION:

Flint 535-A, Flint 535-AM, Flint 535-B,
Flint 535-BM, Flint 549, Flint 549M,



Stool, design Marc Sadler. 4-leg stool with steel frame and upholstered seat.

STACKABLE

4

WEIGHT

5 Kg

PACK

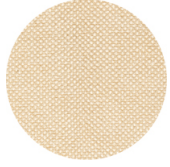
0,33 m³

PIECES PER BOX

2

FINISHES SEATING

TE FABRICS



Sawana Davis
+ 24 colours



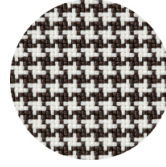
Citadel Camira
+ 16 colours



Medley Gabriel
+ 14 colours



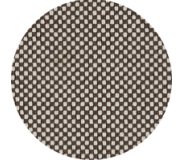
Inca Abitex
+ 15 colours



Go-Couture Gabriel
+ 8 colours



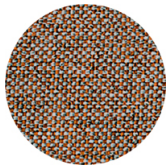
Crazy Flukso
+ 7 colours



Go-Check Gabriel
+ 13 colours



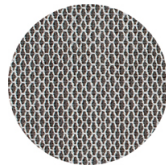
Xtreme Camira
+ 16 colours



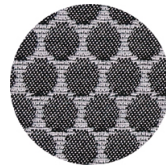
Rivet Camira
+ 12 colours



Valencia Spradling
+ 17 colours



Criss Cross Gabriel
+ 19 colours



Bubble Flukso
+ 9 colours



Europost 2 Gabriel
+ 16 colours



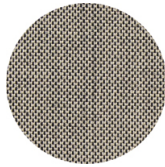
Fame Gabriel
+ 23 colours



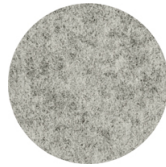
Parotega NF
Skai Hornschuch
+ 8 colours



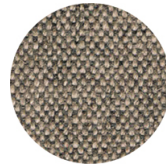
Superb Flukso
+ 13 colours



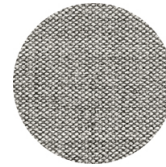
Balta Vescom
+ 12 colours



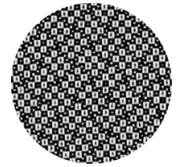
Blazer Camira
+ 25 colours



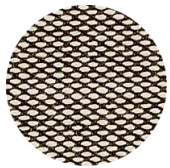
Main line flax Camira
+ 13 colours



Remix 2 Kvadrat
+ 18 colours



Revive 2 Kvadrat
+ 7 colours



Steelcut trio 3 Kvadrat
+ 20 colours

FRAMES

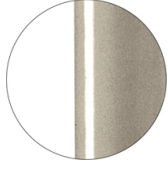
AC STEEL



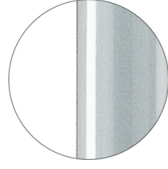
RAL 9016
VR Traffic white



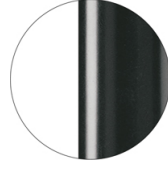
RAL 9010
VR Pure white



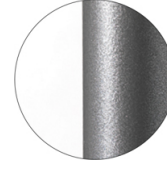
PANTONE 402 C
VR Turtle-dove



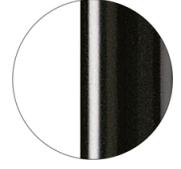
RAL 9006
VR White aluminium



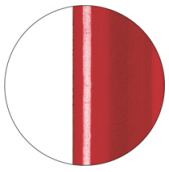
RAL 7016
VR Anthracite grey



VR Pewter



RAL 9005
VR Jet black



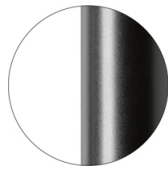
RAL 3003
VR Ruby red



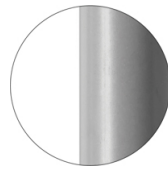
RAL 8017
VR Chocolate brown



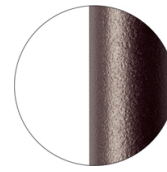
RAL 6005
VR Moss green



RAL 9005
VR Matt Jet Black



RAL 7037
VR Matt Dusty grey



VR Rough metallic
bronze



CR Chrome



CR X Brass chrome



CR X Burnished chrome

USES

coffee & restaurants, retail,