

## Maré 539



MARÉ COLLECTION:  
Maré 539,



Armchair with anodized or powder coated aluminium frame, 4 legs. Polypropylene seat and back.

**STACKABLE**

4

**WEIGHT**

4,5 kg

**PACK**

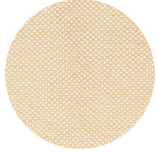
0,47 m<sup>3</sup>

**PIECES PER BOX**

4

## FINISHES SEATING

### TE FABRICS



Sawana Davis  
+ 24 colours



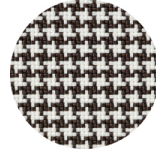
Citadel Camira  
+ 16 colours



Medley Gabriel  
+ 14 colours



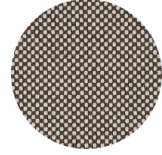
Inca Abitex  
+ 15 colours



Go-Couture Gabriel  
+ 8 colours



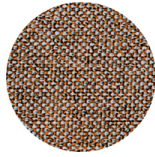
Crazy Flukso  
+ 7 colours



Go-Check Gabriel  
+ 13 colours



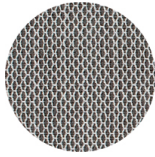
Xtreme Camira  
+ 16 colours



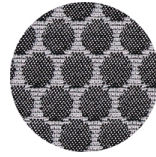
Rivet Camira  
+ 12 colours



Valencia Spradling  
+ 17 colours



Criss Cross Gabriel  
+ 19 colours



Bubble Flukso  
+ 9 colours



Europost 2 Gabriel  
+ 16 colours



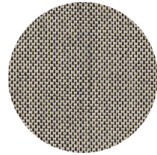
Fame Gabriel  
+ 23 colours



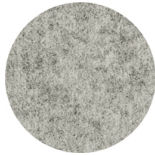
Parotega NF  
Skai Hornschuch  
+ 8 colours



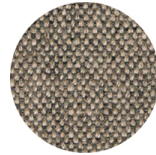
Superb Flukso  
+ 13 colours



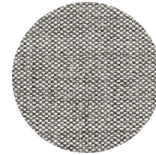
Balta Vescom  
+ 12 colours



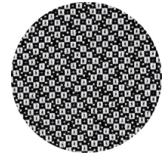
Blazer Camira  
+ 25 colours



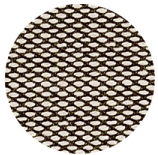
Main line flax Camira  
+ 13 colours



Remix 2 Kvadrat  
+ 18 colours



Revive 2 Kvadrat  
+ 7 colours



Steelcut trio 3 Kvadrat  
+ 20 colours

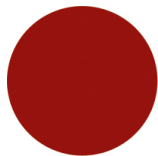
### PP POLYPROPYLENE



RAL 9010 Pure white



PANTONE 402 C Turtle-  
dove



RAL 3003 Ruby red



RAL 9005 Jet black



PANTONE 497 C Mocha



NCS S3010-G30Y  
Pistachio



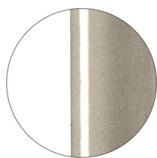
PANTONE 549 C Dusty  
blue

## FRAMES

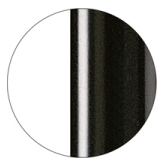
### AL VR PAINTED ALUMINIUM



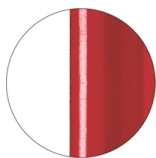
RAL 9010  
VR Pure white



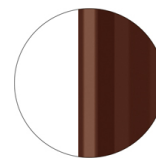
PANTONE 402 C  
VR Turtle-dove



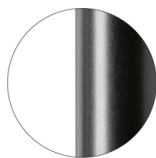
RAL 9005  
VR Jet black



RAL 3003  
VR Ruby red



RAL 8017  
VR Chocolate brown

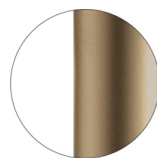


RAL 9005  
VR Matt Jet Black

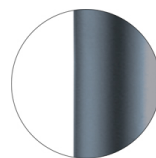
### AL AND ANODISED ALUMINIUM



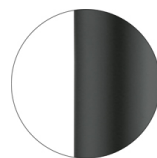
Anodized gloss aluminium



Matt bronze



Matt smoked



Matt Black

## CERTIFICATIONS

- > ANSI/BIFMA X5.1-2011 - Par.11. Prove di fatica sulla seduta (09/05/14)
- > ANSI/BIFMA X5.1-2011 - Par.12. Stabilità (09/05/14)
- > ANSI/BIFMA X5.1-2011 - Par.13. Sforzo statico verticale sui braccioli (09/05/14)
- > ANSI/BIFMA X5.1-2011 - Par.14. Sforzo statico orizzontale sui braccioli (09/05/14)
- > ANSI/BIFMA X5.1-2011 - Par.16. Prove di fatica sullo schienale (09/05/14)
- > ANSI/BIFMA X5.1-2011 - Par.18. Sforzo statico sulla gambe (09/05/14)
- > ANSI/BIFMA X5.1-2011 - Par.21. Prova di fatica sui braccioli (09/05/14)
- > ANSI/BIFMA X5.1-2011 - Par.6. Sforzo statico sullo schienale (09/05/14)
- > ANSI/BIFMA X5.1-2011 - Par.8. Caduta di un peso (09/05/14)
- > UNI/EN 16139:2013 - Par.4.1. Generale. 4.2. Cesoiamento (25/03/14)
- > UNI/EN 16139:2013 - Par.4.3. Stabilità (25/03/14) > UNI/EN 16139:2013 - Par.7. Informazioni per l'uso (25/03/14)
- > UNI/EN 16139:2013 - Prova 1. Carico statico sedile e schienale: 2-Uso estremo (25/03/14)
- > UNI/EN 16139:2013 - Prova 10. Prova di fatica dei braccioli: 2-Uso estremo (25/03/14)
- > UNI/EN 16139:2013 - Prova 12. Carico statico gambe anteriori: 2-Uso estremo (25/03/14)
- > UNI/EN 16139:2013 - Prova 13. Carico statico gambe laterali: 2-Uso estremo (25/03/14)
- > UNI/EN 16139:2013 - Prova 14. Prova di urto sul sedile: 2-Uso estremo (25/03/14)
- > UNI/EN 16139:2013 - Prova 15. Prova di urto sullo schienale: 2-Uso estremo (25/03/14)
- > UNI/EN 16139:2013 - Prova 16. Prova di urto sul bracciolo: 2-Uso estremo (25/03/14)
- > UNI/EN 16139:2013 - Prova 2. Carico statico sul fronte anteriore: 2-Uso estremo (25/03/14)
- > UNI/EN 16139:2013 - Prova 3. Carico verticale sullo schienale: 2-Uso estremo (25/03/14)
- > UNI/EN 16139:2013- Prova 5. Carico statico laterale sui braccioli: 2-Uso estremo (25/03/14)
- > UNI/EN 16139:2013 - Prova 6. Carico statico verticale verso il basso sui braccioli: 2-Uso estremo (25/03/14)
- > UNI/EN 16139:2013 - Prova 7. Carico statico verticale verso l'alto sui braccioli: 2-Uso estremo (25/03/14)
- > UNI/EN 16139:2013 - Prova 8. Prova di fatica sedile e schienale: 2-Uso estremo (25/03/14)
- > UNI/EN 16139:2013 - Prova 9. Prova di fatica sul bordo anteriore: 2-Uso estremo (25/03/14)

## USES

coffee & restaurants, hotels, educational, entertainment, travel, office and waiting areas, retail, health care,